



## Description

**EN** Midget luminaire profile made of extruded aluminium; surface black or natural anodised;  $\pm 15^\circ$  tiltable; plug and play electrical connector system for toolless mounting; flexible connectors for mechanical and electrical connection available; available in 4 beam angles; passively cooled high-power LED system; available in the light colours 3000K and 4000K; min. 90% of the luminous flux after 50 000 hours; colour rendering  $\text{CRI} \geq 95$  ( $\text{R}_9 \geq 90$ ); variant with 50 or 75mm light point spacing; 700mA converter plug and play; converter separately available; degree of protection IP20; PC II (power supply) or PC III (light insets); optionally non-dimmable or DALI-2 control

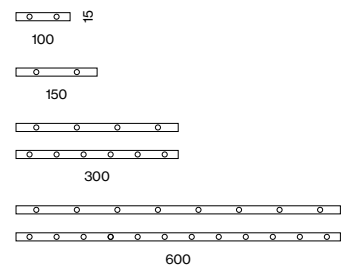
**IT** Profilo faro miniatura in alluminio estruso; superficie nera o anodizzata naturale; orientabile  $\pm 15^\circ$ ; montaggio senza attrezzi tramite connettore con innesto rapido a baionetta; connettore flessibile per collegamento elettrico e meccanico disponibile; disponibile in 4 diversi angoli del fascio; sistema LED High Power a raffreddamento passivo; disponibile in temperatura di colore 3000K e 4000K; min. 90% di flusso luminoso rimanente dopo 50 000 h di durata; reso cromatico  $\text{CRI} \geq 95$  ( $\text{R}_9 \geq 90$ ); versione con distanza punto luce a 50 o 75 mm; convertitore da 700 mA premontato e pronto all'uso; convertitore da ordinare separatamente; protezione IP20; classe isolamento II (alimentazione) o classe isolamento III (unità luce); a scelta non dimmerabile o comandi con DALI-2

**NANO** turn  
recessed

## Quickinfo

3000 K, 4000 K  
 $\text{CRI} \geq 95$  ( $\text{R}_9 \geq 90$ )  
 L90 @ 50 000 h  
 up to 1130 lm/m  
 non DIM, DALI-2

## Types



## Colours



## Light distributions



### Order options

#### COLOUR TEMPERATURE

3000K CRI≥95 90lm*	5
4000K CRI≥95 100lm*	6

\*per LED | CRI≥95 (R9≥90) | 350mA | 60°C

#### MATERIAL COLOUR

anodised aluminium	6
anodised black	8

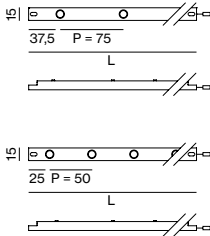
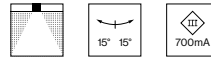


#### BEAM ANGLE

spot 20°	S
medium 30°	M
flood 40°	F
wide flood 65°	W



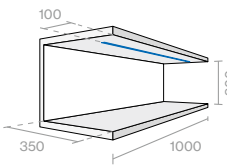
### NANO turn



P = LED pitch

SYSTEM POWER / VOLTAGE	NO. OF LEDS	L   P (mm)	ORDER CODE
2x1.2W / 3V	2	100   50	007-40101 1 1 1
2x1.2W / 3V	2	150   75	007-40011 1 1 1
4x1.2W / 6V	4	300   75	007-40031 1 1 1
6x1.2W / 9V	6	300   50	007-40131 1 1 1
8x1.2W / 12V	8	600   75	007-40061 1 1 1
12x1.2W / 18V	12	600   50	007-40161 1 1 1

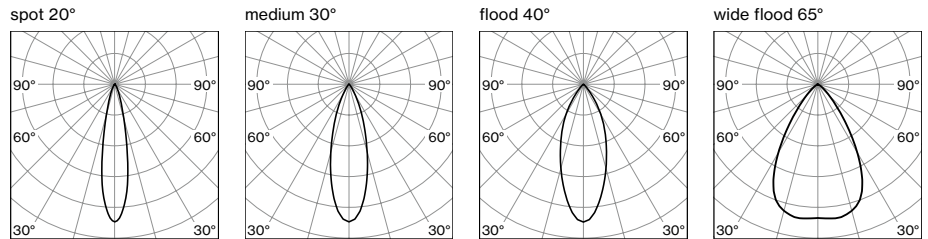
#### ILLUMINANCE EXAMPLE (E<sub>max</sub> in lux)



BEAM ANGLE	COLOUR TEMP.	HEIGHT 0.3 m	HEIGHT 0.3 m
		3x(4x1.2W) P=75mm	3x(6x1.2W) P=50mm
20°	3000K	5335	8025
30°	3000K	4765	7142
40°	3000K	3936	5902
65°	3000K	3030	4534

reflection factors 0.2/0.5/0.7 | maintenance factor 0.8

#### LIGHT DISTRIBUTION



### Order options

#### LENGTH

175 mm	0
1000 mm	2
2000 mm	4
4000 mm	6

### Electrical accessories

#### CONVERTER supply 220-240V AC, 700 mA, 50-60 Hz, PC II

incl. power cable 2 m + connection cable with plug 1 m

TYPE	LEDS	CABLE (m)	L-W-H (mm)	ORDER CODE
8 W / 2,5-12 V non DIM	2-6	max.18	64-34-21	007-1953110
10 W / 7-14 V non DIM	6-8	max.5	95-53-25	007-1953210
20 W / 2-28 V non DIM	2-16	max.10	111-52-22	007-1953310
45 W / 20-54 V non DIM	14-32	max.11	215-70-31	007-1953510
20 W / 2-28 V DALI-2	2-16	max.10	111-52-22	007-1953330
38 W / 10-54 V DALI-2	8-32	max.11	147-44-30	007-1953530

#### SPLITTER SERIAL, AWG22

TYPE	INPUT / OUTPUT	L-W-H (mm)	ORDER CODE
splitter 700 mA + cable 500 mm	1x socket / 9x plug	85-50-10	007-1959310
adapter cable 100 mm	1x socket / 1x plug	-	007-1963210

#### EXTENSION CABLE

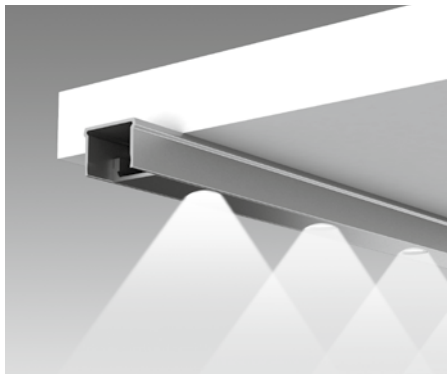
TYPE	INPUT / OUTPUT	L (mm)	ORDER CODE
extension cable	1x socket / 1x plug	-	007-1961110
extension cable	2x plug	75	007-1962110
extension cable	2x plug	100	007-1962210
extension cable	2x plug	125	007-1962310

### Other accessories

TYPE	ORDER CODE
mounting connector: ±90° tiltable, ±45° rotatable	007-400000 1
end feeder (pair): ±90° tiltable	007-400010 1

# NANO channels

## Channel 90



**EN** Mounting channel for NANO modules for recessed or surface mounting; also as higher variant (90+); variant with straight; for use with a beam angle of 90° onto the lower shelf; mounting tape available

**IT** Canale di montaggio per moduli NANO ad incasso o soffitto; anche in versione più alta (90+); taglio diritto; angolo del fascio luminoso di 90° sul ripiano inferiore; nastro adesivo da montaggio disponibile

## Channel 60



**EN** Mounting channel for NANO modules for recessed or surface mounting; with straight cut; for use with a beam angle of 60° onto the lower shelf; optimum illumination of shelf niches with equal shelf height and depth; mounting tape available

**IT** Canale di montaggio per moduli NANO ad incasso o soffitto; taglio diritto; angolo del fascio luminoso di 60° sul ripiano inferiore; illuminamento ottimale delle nicchie di ripiani con stessa altezza e profondità; nastro adesivo da montaggio disponibile

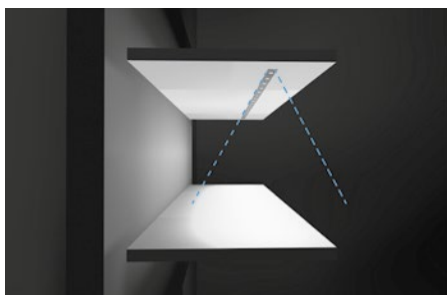
## Channel 45



**EN** Mounting channel for NANO modules for recessed or surface mounting; for use with a beam angle of 45° onto the lower shelf; optimum illumination of shelf niches with low height; shelf height to depth ratio of 1:2

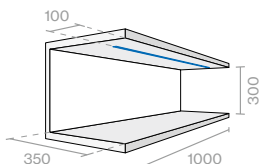
**IT** Canale di montaggio per moduli NANO ad incasso o soffitto; per applicazioni con angolo del fascio luminoso di 45° sul ripiano inferiore; illuminamento ottimale delle nicchie di ripiani con altezza ridotta; rapporto altezza/profondità ripiano 1:2

### Illuminance example



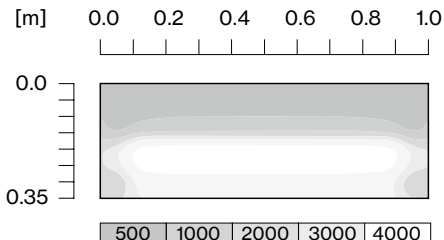
#### GENERAL

NANO turn 3×(6×1.2W)  
3000 K CRI ≥ 95 (R9 ≥ 90)  
anodised aluminium  
medium 30°

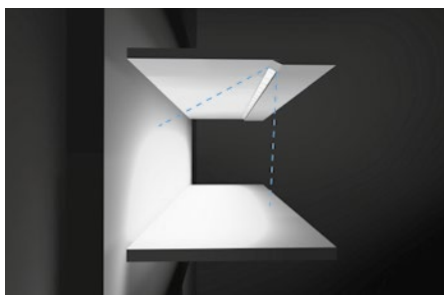


reflection factors 0.2/0.5/0.7 | maintenance factor 0.8

#### RESULT

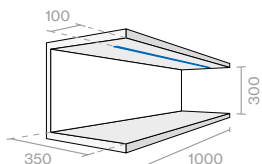


### Illuminance example



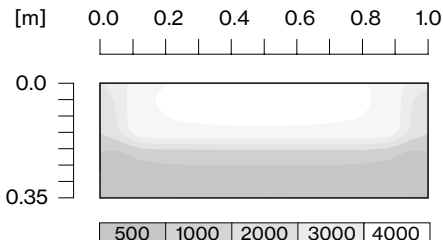
#### GENERAL

NANO turn 3×(6×1.2W)  
3000 K CRI ≥ 95 (R9 ≥ 90)  
anodised aluminium  
medium 30°

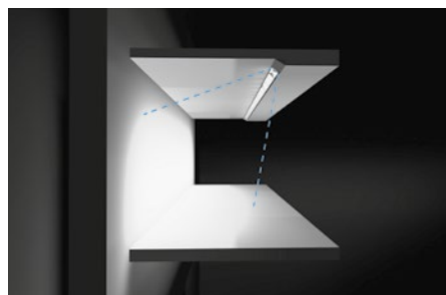


reflection factors 0.2/0.5/0.7 | maintenance factor 0.8

#### RESULT

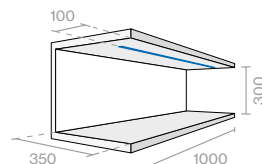


### Illuminance example



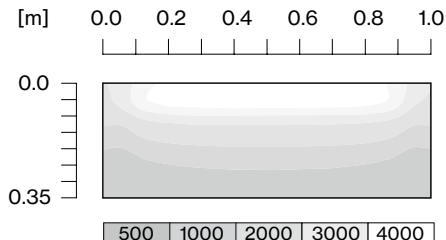
#### GENERAL

NANO turn 3×(6×1.2W)  
3000 K CRI ≥ 95 (R9 ≥ 90)  
anodised aluminium  
medium 30°



reflection factors 0.2/0.5/0.7 | maintenance factor 0.8

#### RESULT



## Order options

### TYPE

straight cut



### MATERIAL COLOUR

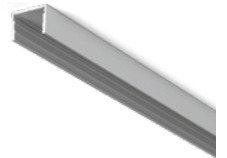
anodised aluminium  6  
anodised black  8



## Mounting channels

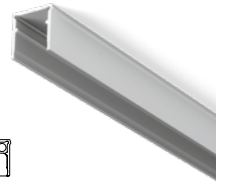
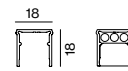
### NANO CHANNEL 90

L (mm)	ORDER CODE
300	007-190104 <input checked="" type="checkbox"/>
600	007-190106 <input checked="" type="checkbox"/>
900	007-190107 <input checked="" type="checkbox"/>
1200	007-190108 <input checked="" type="checkbox"/>
3000	007-190109 <input checked="" type="checkbox"/>
custom cut (straight cut)	E 84500 ····· <input checked="" type="checkbox"/>
end caps (pair)	007-190301 <input checked="" type="checkbox"/>



### NANO CHANNEL 90+

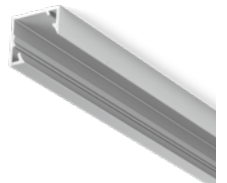
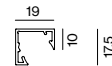
L (mm)	ORDER CODE
300	007-190164 <input checked="" type="checkbox"/>
600	007-190166 <input checked="" type="checkbox"/>
900	007-190167 <input checked="" type="checkbox"/>
1200	007-190168 <input checked="" type="checkbox"/>
3000	007-190169 <input checked="" type="checkbox"/>
custom cut	E 84510 ····· <input checked="" type="checkbox"/>
end caps (pair)	007-191361 <input checked="" type="checkbox"/>



space for up to 3 pieces of power cable

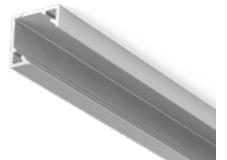
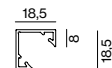
### NANO CHANNEL 60

L (mm)	ORDER CODE
300	007-190114 <input checked="" type="checkbox"/>
600	007-190116 <input checked="" type="checkbox"/>
900	007-190117 <input checked="" type="checkbox"/>
1200	007-190118 <input checked="" type="checkbox"/>
3000	007-190119 <input checked="" type="checkbox"/>
custom cut	E 84520 ····· <input checked="" type="checkbox"/>
end caps (pair)	007-190311 <input checked="" type="checkbox"/>



### NANO CHANNEL 45

L (mm)	ORDER CODE
300	007-190124 <input checked="" type="checkbox"/>
600	007-190126 <input checked="" type="checkbox"/>
900	007-190127 <input checked="" type="checkbox"/>
1200	007-190128 <input checked="" type="checkbox"/>
3000	007-190129 <input checked="" type="checkbox"/>
custom cut	E 84530 ····· <input checked="" type="checkbox"/>
end caps (pair)	007-190321 <input checked="" type="checkbox"/>



## ACCESSORIES

TYPE	ORDER CODE
blind cover 150 mm	007-190281 <input checked="" type="checkbox"/>
blind cover 300 mm	007-190284 <input checked="" type="checkbox"/>
blind cover 600 mm	007-190286 <input checked="" type="checkbox"/>
tape L 3000 mm / W 18 mm	007-191919 <input checked="" type="checkbox"/>

