

MOVE IT 25/45 system

acoustic elements

EN Acoustic element made of high quality, self-supporting, recycled PET felt with sound absorbing properties; different versions: choice of square, rectangular or triangular design (only MOVE IT 25); high quality visual and tactile surface with embossed pattern; absorption of direct sound and sound reflected from the ceiling; this creates high acoustic performance; for installation in the MOVE IT 25/45 suspended system composed of node connectors and profiles; subsequent insertion in already installed MOVE IT suspended system possible; installation without tools

FR Élément acoustique en feutre PET recyclé, autoportant, haute qualité, doué de propriétés insonorisantes ; diverses variantes : forme au choix carrée, rectangulaire ou triangulaire ; surface de haute qualité optique et tactile avec motif gaufré ; inclusions de fibres étrangères possibles ; absorption du bruit direct et du bruit réfléchi par le plafond ; pour de meilleures performances acoustiques ; à insérer dans le système suspendu MOVE IT 25/45 composé de jonctions et profils disponibles ; possibilité d'insertion ultérieure dans un MOVE IT suspendu système déjà en place ; montage sans outil

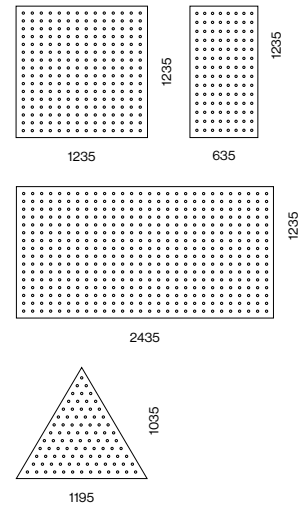
Quickinfo

PET felt

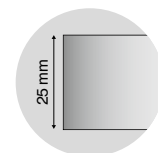
♻️ from recycled material
up to absorption class A

🔥 flame retardant version available

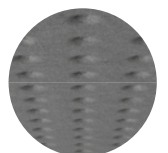
Types



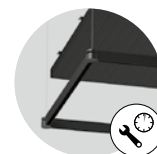
Acoustic colours



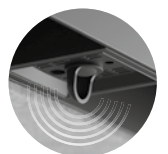
flat acoustic inlay 25 mm



embossed finish



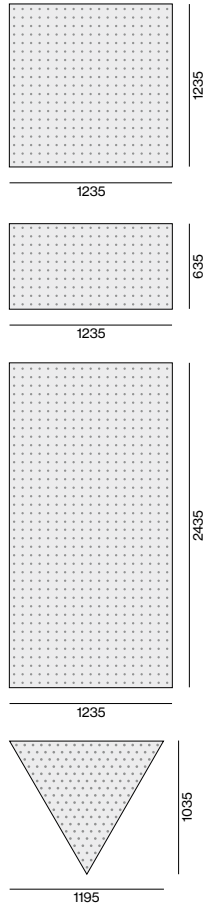
quick and easy to retrofit



sensor inset available

Order options

ACOUSTIC COLOUR	
<input type="radio"/> white	W
<input type="radio"/> marble grey	D
<input type="radio"/> anthracite	B
<input type="radio"/> black	L
<input type="radio"/> limestone	S



MOVE IT 25 / 45 acoustic suspended

A
B
C
D
E

α_w 1.00

1.30
NRC

1.32
SAA

ACOUSTIC ELEMENT

TYPE	L-W-H (mm)	ORDER CODE
square grid inlay	1235-1235-25	050-231121 <input checked="" type="checkbox"/>
half grid inlay	635-1235-25	050-231221 <input checked="" type="checkbox"/>
double grid inlay	2435-1235-25	050-231321 <input checked="" type="checkbox"/>
triangle inlay*	1195-1035-25	050-231421 <input checked="" type="checkbox"/>

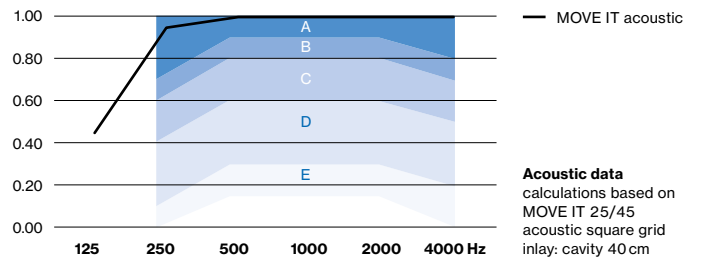
mounting only in MOVE IT 25/45 system with NODE connector + track 620 mm, 1220 mm or 2420 mm; *only available for MOVE IT 25 system

Acoustic data

Equivalent sound absorption area (A_{eq})

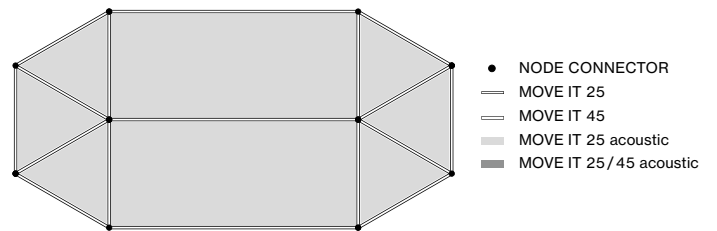
TYPE	125	250	500	1000	2000	4000 Hz
square grid inlay	0.73	1.47	1.73	2.20	2.67	2.77
half grid inlay	0.57	0.83	0.93	1.27	1.57	1.57
double grid inlay	1.30	2.73	3.20	4.10	4.97	5.23
triangle inlay	0.33	0.57	0.73	0.97	1.27	1.33

Sound absorption coefficient (α_p)

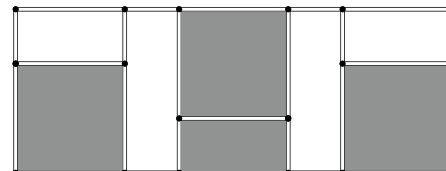


Configuration examples

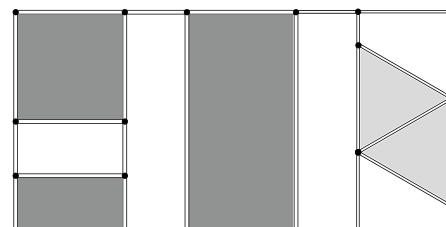
MOVE IT 25 system



MOVE IT 45 system



MOVE IT 25 / 45 system



MOVE IT 25 system



MOVE IT 45 system