



FINA spot line system

recessed / surface

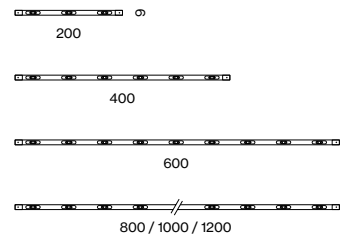
EN Miniature linear light inset made of aluminium; tubular design; optionally for recessed or surface mounting (available as an accessory); surface lacquered; plug and play electrical connector system for toolless mounting; different connectors for mechanical and electrical connection available; for flexible system design; fitted with LED light points; precise radiation characteristic with different symmetrical light distributions; or with asymmetric light distribution; light inset rotatable; energy-efficient LEDs with very good colour rendering; converter plug and play; converter separately available

DE Miniatur-Linear-Lichteinsatz aus Aluminium; tubulare Bauform; wahlweise für Einbau- oder Anbaumontage (als Zubehör erhältlich); Oberfläche lackiert; durchkontaktiertes elektrisches Stecksystem für werkzeuglose Montage; unterschiedliche Verbinder für mechanische und elektrische Verbindung verfügbar; für flexiblen Systemaufbau; bestückt mit LED Lichtpunkten; präzise Abstrahlcharakteristik mit unterschiedlichen symmetrischen Lichtverteilungen; oder mit asymmetrischer Lichtverteilung; Lichteinsatz drehbar; energieeffiziente LEDs mit sehr guter Farbwiedergabe; Konverter steckerfertig vorkonfektioniert; Konverter ist separat zu bestellen

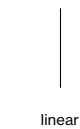
Quickinfo

3000K, 4000K
 CRI ≥ 95 (R9 ≥ 90)
 L80 @ 50000h
 up to 80lm per spot
 non DIM, DALI-2

Types



Configurations



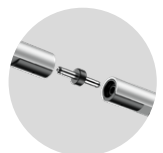
Colours



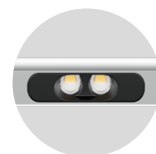
Light distributions



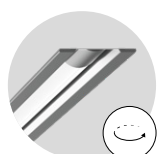
CRI ≥ 95
 R9 ≥ 90



plug & play



brilliance effect



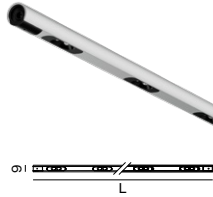
fine adjustment possible

Order options

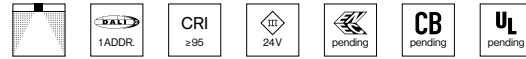
COLOUR TEMPERATURE	☼☼
3000K	0
4000K	1

MATERIAL COLOUR	☑
● white aluminium RAL 9006	6
● black RAL 9021	8

BEAM ANGLE	▲
spot 20°	S
medium 30°	M
asymmetric	A



FINA spot line



INSET ROUND

INS. POWER	COLOUR TEMP.	LUM. FLUX	L (mm)	ORDER CODE
4.8 W	3000 K	3×78lm	200	0 1 1 - 0 1 0 2 :: 1 ☑ ▲
	4000 K	3×80lm		
9.6 W	3000 K	6×78lm	400	0 1 1 - 0 1 0 3 :: 1 ☑ ▲
	4000 K	6×80lm		
14 W	3000 K	9×78lm	600	0 1 1 - 0 1 0 4 :: 1 ☑ ▲
	4000 K	9×80lm		
19.2 W	3000 K	12×78lm	800	0 1 1 - 0 1 0 5 :: 1 ☑ ▲
	4000 K	12×80lm		
24 W	3000 K	15×78lm	1000	0 1 1 - 0 1 0 6 :: 1 ☑ ▲
	4000 K	15×80lm		
28.8 W	3000 K	18×78lm	1200	0 1 1 - 0 1 0 7 :: 1 ☑ ▲
	4000 K	18×80lm		

light inset incl. 1 electrical linear connector

Mounting channels

see last page

Electrical accessories

POWER SUPPLY 24 V EU 220-240V AC, 50-60Hz, PC II

incl. power cable 2m + connection cable with plug 1m

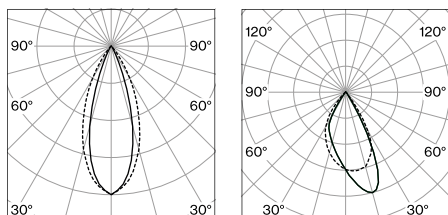
TYPE	L-W-H (mm)	ORDER CODE
18 W non DIM	130-43-30	0 1 1 - 9 2 1 2 1 1 0
35 W non DIM	195-43-30	0 1 1 - 9 2 1 2 2 1 0
60 W non DIM	220-43-30	0 1 1 - 9 2 1 2 3 1 0
18 W DALI-2	130-43-30	0 1 1 - 9 2 1 2 1 3 0
35 W DALI-2	195-43-30	0 1 1 - 9 2 1 2 2 3 0
60 W DALI-2	220-43-30	0 1 1 - 9 2 1 2 3 3 0

POWER SUPPLY 24 V UL 100-120V AC, 50-60Hz, PC II

connection cable with plug 1m

TYPE	L-W-H (mm)	ORDER CODE
20 W non DIM	153-41-32	0 1 1 - 9 2 8 2 1 1 0
40 W non DIM	210-40-30	0 1 1 - 9 2 8 2 2 1 0
60 W non DIM	250-40-30	0 1 1 - 9 2 8 2 3 1 0
60 W DALI-2	176-45-32	0 1 1 - 9 2 8 2 3 3 0
60 W 1-10V	176-45-32	0 1 1 - 9 2 8 2 3 2 0

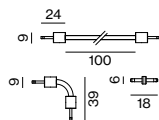
Light distributions



medium 30°

asymmetric

INSET POWER is the current consumption excluding any ballast
LUMINOUS FLUX value calculated for CRI≥95, medium lens, colour black



CONNECTORS

TYPE	L (mm)	ORDER CODE
electrical flex connector	100	0 1 1 - 9 2 2 5 1 0 0
electrical flex connector 90°	30	0 1 1 - 9 2 2 5 2 0 0
electrical linear connector		0 1 1 - 9 2 2 5 3 0 0

EXTENSION CABLE

TYPE	L (mm)	ORDER CODE
1×socket / 1×plug	1000	0 1 1 - 9 2 2 2 1 2 0
1×socket / 1×plug	2000	0 1 1 - 9 2 2 2 1 4 0
1×socket / 1×plug	4000	0 1 1 - 9 2 2 2 1 8 0
1×socket / 1×plug 90°	1000	0 1 1 - 9 2 2 2 2 2 0
1×socket / 1×plug 90°	2000	0 1 1 - 9 2 2 2 2 4 0
1×socket / 1×plug 90°	4000	0 1 1 - 9 2 2 2 2 8 0

MOUNTING

TYPE	ORDER CODE
mounting tool	0 1 1 - 9 1 9 0 0 0 0



FINA opal system

recessed / surface

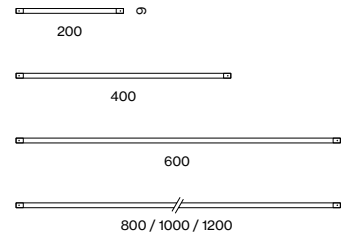
EN Miniature linear light inset made of aluminium; tubular design; optionally for recessed or surface mounting (available as an accessory); surface lacquered; plug and play electrical connector system for toolless mounting; different connectors for mechanical and electrical connection available; for flexible system design; completely homogeneously illuminated, satinised PMMA cover; light inset rotatable; energy-efficient LEDs with very good colour rendering; converter plug and play; converter separately available

DE Miniatur-Linear-Lichteinsatz aus Aluminium; tubulare Bauform; wahlweise für Einbau- oder Anbaumontage (als Zubehör erhältlich); Oberfläche lackiert; durchkontaktiertes elektrisches Stecksystem für werkzeuglose Montage; unterschiedliche Verbinder für mechanische und elektrische Verbindung verfügbar; für flexiblen Systemaufbau; absolut homogen ausgeleuchtete, satinierte PMMA-Abdeckung; Lichteinsatz drehbar; energieeffiziente LEDs mit sehr guter Farbwiedergabe; Konverter steckerfertig vorkonfektioniert; Konverter ist separat zu bestellen

Quickinfo

3000 K, 4000 K
 CRI ≥ 97 (R9 ≥ 90)
 L90 @ 50 000 h
 up to 1090 lm/m
 non DIM, DALI-2

Types



Colours



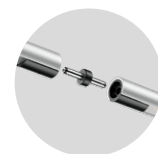
Light distribution



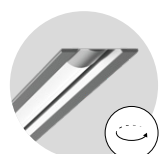
opal



CRI ≥ 97
 R9 ≥ 90



plug & play



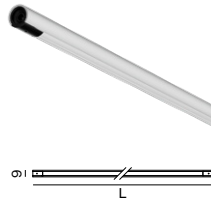
fine adjustment possible

Order options

COLOUR TEMPERATURE	
3000K	0
4000K	1

MATERIAL COLOUR	
● white aluminium RAL 9006	6
● black RAL 9021	8

BEAM ANGLE	
opal	



FINA opal



INSET ROUND

INS. POWER	COLOUR TEMP.	LUM. FLUX	L (mm)	ORDER CODE
3.6 W	3000 K	199lm	200	0 1 1 - 1 1 0 2 :: 1 □ ○
	4000 K	218lm		
7.3 W	3000 K	398lm	400	0 1 1 - 1 1 0 3 :: 1 □ ○
	4000 K	436lm		
11.6 W	3000 K	637lm	600	0 1 1 - 1 1 0 4 :: 1 □ ○
	4000 K	698lm		
14.6 W	3000 K	797lm	800	0 1 1 - 1 1 0 5 :: 1 □ ○
	4000 K	873lm		
18.2 W	3000 K	996lm	1000	0 1 1 - 1 1 0 6 :: 1 □ ○
	4000 K	1090lm		
21.8 W	3000 K	1200lm	1200	0 1 1 - 1 1 0 7 :: 1 □ ○
	4000 K	1310lm		

light inset incl. 1 electrical linear connector

Mounting channels

see last page

Electrical accessories

POWER SUPPLY 24 V EU 220-240V AC, 50-60Hz, □ PC II

incl. power cable 2m + connection cable with plug 1m

TYPE	L-W-H (mm)	ORDER CODE
18 W non DIM	130-43-30	0 1 1 - 9 2 1 2 1 1 0
35 W non DIM	195-43-30	0 1 1 - 9 2 1 2 2 1 0
60 W non DIM	220-43-30	0 1 1 - 9 2 1 2 3 1 0
18 W DALI-2	130-43-30	0 1 1 - 9 2 1 2 1 3 0
35 W DALI-2	195-43-30	0 1 1 - 9 2 1 2 2 3 0
60 W DALI-2	220-43-30	0 1 1 - 9 2 1 2 3 3 0

POWER SUPPLY 24 V UL 100-120V AC, 50-60Hz, □ PC II

connection cable with plug 1m

TYPE	L-W-H (mm)	ORDER CODE
20 W non DIM	153-41-32	0 1 1 - 9 2 8 2 1 1 0
40 W non DIM	210-40-30	0 1 1 - 9 2 8 2 2 1 0
60 W non DIM	250-40-30	0 1 1 - 9 2 8 2 3 1 0
60 W DALI-2	176-45-32	0 1 1 - 9 2 8 2 3 3 0
60 W 1-10V	176-45-32	0 1 1 - 9 2 8 2 3 2 0

Other accessories

CONNECTORS

TYPE	L (mm)	ORDER CODE
electrical flex connector	100	0 1 1 - 9 2 2 5 1 0 0
electrical flex connector 90°	30	0 1 1 - 9 2 2 5 2 0 0
electrical linear connector		0 1 1 - 9 2 2 5 3 0 0

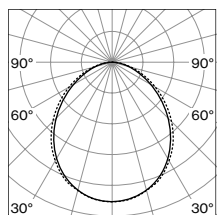
EXTENSION CABLE

TYPE	L (mm)	ORDER CODE
1×socket / 1×plug	1000	0 1 1 - 9 2 2 2 1 2 0
1×socket / 1×plug	2000	0 1 1 - 9 2 2 2 1 4 0
1×socket / 1×plug	4000	0 1 1 - 9 2 2 2 1 8 0
1×socket / 1×plug 90°	1000	0 1 1 - 9 2 2 2 2 2 0
1×socket / 1×plug 90°	2000	0 1 1 - 9 2 2 2 2 4 0
1×socket / 1×plug 90°	4000	0 1 1 - 9 2 2 2 2 8 0

MOUNTING

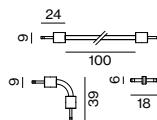
TYPE	ORDER CODE
mounting tool	0 1 1 - 9 1 9 0 0 0 0

Light distribution



opal

INSET POWER is the current consumption excluding any ballast
LUMINOUS FLUX value calculated for CRI≥97, colour black





FINA lead system

recessed / surface

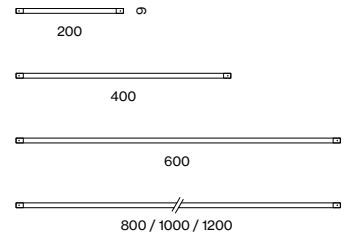
EN Miniature linear light inset made of aluminium; tubular design; optionally for recessed or surface mounting (available as an accessory); surface lacquered; plug and play electrical connector system for toolless mounting; different connectors for mechanical and electrical connection available; for flexible system design; with specially computed foil for asymmetrical light distribution; light inset rotatable; energy-efficient LEDs with very good colour rendering; converter plug and play; converter separately available

DE Miniatur-Linear-Lichteinsatz aus Aluminium; tubulare Bauform; wahlweise für Einbau- oder Anbaumontage (als Zubehör erhältlich); Oberfläche lackiert; durchkontaktiertes elektrisches Stecksystem für werkzeuglose Montage; unterschiedliche Verbinder für mechanische und elektrische Verbindung verfügbar; für flexiblen Systemaufbau; mit speziell berechneter Folie zur asymmetrischen Lichtverteilung; Lichteinsatz drehbar; energieeffiziente LEDs mit sehr guter Farbwiedergabe; Konverter steckerfertig vorkonfektioniert; Konverter ist separat zu bestellen

Quickinfo

3000 K, 4000 K
 CRI ≥ 97 (R9 ≥ 90)
 L90 @ 50 000 h
 up to 1250 lm/m
 non DIM, DALI-2

Types



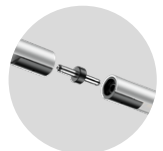
Colours



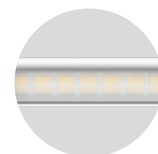
Light distribution



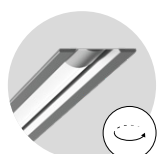
CRI ≥ 97
 R9 ≥ 90



plug & play



light-directing
 foil (lead optic)



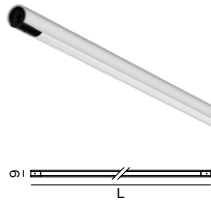
fine adjustment
 possible

Order options

COLOUR TEMPERATURE	
3000K	0
4000K	1

MATERIAL COLOUR	
● white aluminium RAL 9006	6
● black RAL 9021	8

BEAM ANGLE	
lead asymmetric	



FINA lead



INSET ROUND

INS. POWER	CALAU TEMP.	LUM. FLUX	L (mm)	ORDER CODE
3.6 W	3000 K	228 lm	200	0 1 1 - 1 1 0 2 :: 1 A
	4000 K	250 lm		
7.3 W	3000 K	456 lm	400	0 1 1 - 1 1 0 3 :: 1 A
	4000 K	500 lm		
11.6 W	3000 K	730 lm	600	0 1 1 - 1 1 0 4 :: 1 A
	4000 K	800 lm		
14.6 W	3000 K	913 lm	800	0 1 1 - 1 1 0 5 :: 1 A
	4000 K	1000 lm		
18.2 W	3000 K	1140 lm	1000	0 1 1 - 1 1 0 6 :: 1 A
	4000 K	1250 lm		
21.8 W	3000 K	1370 lm	1200	0 1 1 - 1 1 0 7 :: 1 A
	4000 K	1500 lm		

light inset incl. 1 electrical linear connector

Mounting channels

see last page

Electrical accessories

POWER SUPPLY 24 V EU 220-240V AC, 50-60Hz, PC II

incl. power cable 2m + connection cable with plug 1m

TYPE	L-W-H (mm)	ORDER CODE
18 W non DIM	130-43-30	0 1 1 - 9 2 1 2 1 1 0
35 W non DIM	195-43-30	0 1 1 - 9 2 1 2 2 1 0
60 W non DIM	220-43-30	0 1 1 - 9 2 1 2 3 1 0
18 W DALI-2	130-43-30	0 1 1 - 9 2 1 2 1 3 0
35 W DALI-2	195-43-30	0 1 1 - 9 2 1 2 2 3 0
60 W DALI-2	220-43-30	0 1 1 - 9 2 1 2 3 3 0

POWER SUPPLY 24 V UL 100-120V AC, 50-60Hz, PC II

connection cable with plug 1m

TYPE	L-W-H (mm)	ORDER CODE
20 W non DIM	153-41-32	0 1 1 - 9 2 8 2 1 1 0
40 W non DIM	210-40-30	0 1 1 - 9 2 8 2 2 1 0
60 W non DIM	250-40-30	0 1 1 - 9 2 8 2 3 1 0
60 W DALI-2	176-45-32	0 1 1 - 9 2 8 2 3 3 0
60 W 1-10V	176-45-32	0 1 1 - 9 2 8 2 3 2 0

Other accessories

CONNECTORS

TYPE	L (mm)	ORDER CODE
electrical flex connector	100	0 1 1 - 9 2 2 5 1 0 0
electrical flex connector 90°	30	0 1 1 - 9 2 2 5 2 0 0
electrical linear connector		0 1 1 - 9 2 2 5 3 0 0

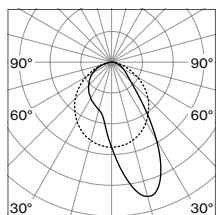
EXTENSION CABLE

TYPE	L (mm)	ORDER CODE
1x socket / 1x plug	1000	0 1 1 - 9 2 2 2 1 2 0
1x socket / 1x plug	2000	0 1 1 - 9 2 2 2 1 4 0
1x socket / 1x plug	4000	0 1 1 - 9 2 2 2 1 8 0
1x socket / 1x plug 90°	1000	0 1 1 - 9 2 2 2 2 2 0
1x socket / 1x plug 90°	2000	0 1 1 - 9 2 2 2 2 4 0
1x socket / 1x plug 90°	4000	0 1 1 - 9 2 2 2 2 8 0

MOUNTING

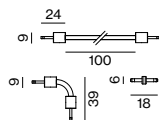
TYPE	ORDER CODE
mounting tool	0 1 1 - 9 1 9 0 0 0 0

Light distribution



lead asymmetric

INSET POWER is the current consumption excluding any ballast
LUMINOUS FLUX value calculated for CRI ≥ 97, colour black





FINA stadio system

recessed

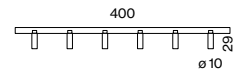
EN Miniature linear light inset made of aluminium; tubular design; optionally for recessed or surface mounting (available as an accessory); surface lacquered; plug and play electrical connector system for toolless mounting; different connectors for mechanical and electrical connection available; for flexible system design; equipped with miniature spotlight heads; spotlight heads rotatable and tiltable; high quality lens system; precise radiation characteristics with different beam angles; light inset rotatable; energy-efficient LEDs with very good colour rendering; converter plug and play; converter separately available

DE Miniatur-Linear-Lichteinsatz aus Aluminium; tubulare Bauform; wahlweise für Einbau- oder Anbaumontage (als Zubehör erhältlich); Oberfläche lackiert; durchkontaktiertes elektrisches Stecksystem für werkzeuglose Montage; unterschiedliche Verbinder für mechanische und elektrische Verbindung verfügbar; für flexiblen Systemaufbau; bestückt mit Miniatur-Strahlerköpfen; Strahlerköpfe dreh- und schwenkbar; hochwertige Linsenoptik; präzise Abstrahlcharakteristik mit verschiedenen Ausstrahlwinkeln; Lichteinsatz drehbar; energieeffiziente LEDs mit sehr guter Farbwiedergabe; Konverter steckerfertig vorkonfektioniert; Konverter ist separat zu bestellen

Quickinfo

3000 K, 4000 K
 CRI ≥ 95 (R9 ≥ 90)
 L80 @ 50000 h
 up to 60 lm per spot
 non DIM, DALI-2

Types



Colours



Light distributions



CRI ≥ 95
 R9 ≥ 90



plug & play



360° rotatable
 90° tiltable



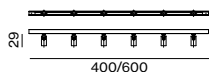
easy
 exchangeable

Order options

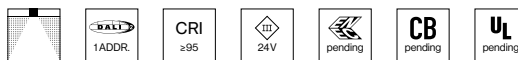
COLOUR TEMPERATURE	
3000K	0
4000K	1

MATERIAL COLOUR	
● white aluminium RAL 9006	6
● black RAL 9021	8

BEAM ANGLE	
spot 18°	S
medium 30°	M
flood 39°	F



FINA studio 10



INSET ROUND

INS. POWER	COLOUR TEMP.	LUM. FLUX	L (mm)	ORDER CODE
4.7 W	3000 K	6 × 55lm	400	0 1 1 - 2 1 0 3 :: 1 ▣ ▲
	4000 K	6 × 60lm		

light inset incl. 1 electrical linear connector

Mounting channels

see last page

Electrical accessories

POWER SUPPLY 24V EU 220-240V AC, 50-60Hz, □ PC II

incl. power cable 2m + connection cable with plug 1m

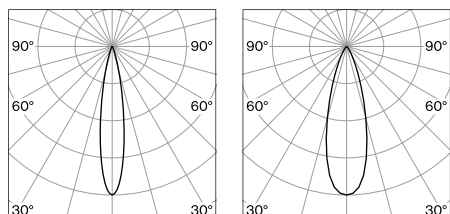
TYPE	L-W-H (mm)	ORDER CODE
18 W non DIM	130-43-30	0 1 1 - 9 2 1 2 1 1 0
35 W non DIM	195-43-30	0 1 1 - 9 2 1 2 2 1 0
60 W non DIM	220-43-30	0 1 1 - 9 2 1 2 3 1 0
18 W DALI-2	130-43-30	0 1 1 - 9 2 1 2 1 3 0
35 W DALI-2	195-43-30	0 1 1 - 9 2 1 2 2 3 0
60 W DALI-2	220-43-30	0 1 1 - 9 2 1 2 3 3 0

POWER SUPPLY 24V UL 100-120V AC, 50-60 Hz, □ PC II

connection cable with plug 1m

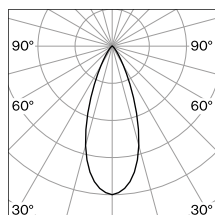
TYPE	L-W-H (mm)	ORDER CODE
20 W non DIM	153-41-32	0 1 1 - 9 2 8 2 1 1 0
40 W non DIM	210-40-30	0 1 1 - 9 2 8 2 2 1 0
60 W non DIM	250-40-30	0 1 1 - 9 2 8 2 3 1 0
60 W DALI-2	176-45-32	0 1 1 - 9 2 8 2 3 3 0
60 W 1-10V	176-45-32	0 1 1 - 9 2 8 2 3 2 0

Light distributions

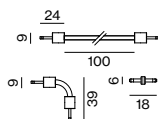


spot 18°

medium 30°



flood 39°



Other accessories

TYPE	L (mm)	ORDER CODE
electrical flex connector	100	0 1 1 - 9 2 2 5 1 0 0
electrical flex connector 90°	30	0 1 1 - 9 2 2 5 2 0 0
electrical linear connector		0 1 1 - 9 2 2 5 3 0 0

EXTENSION CABLE

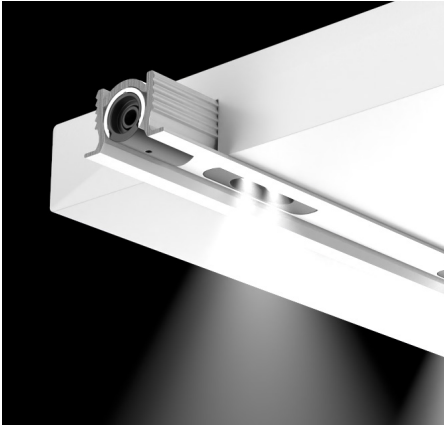
TYPE	L (mm)	ORDER CODE
1 × socket / 1 × plug	1000	0 1 1 - 9 2 2 2 1 2 0
1 × socket / 1 × plug	2000	0 1 1 - 9 2 2 2 1 4 0
1 × socket / 1 × plug	4000	0 1 1 - 9 2 2 2 1 8 0
1 × socket / 1 × plug 90°	1000	0 1 1 - 9 2 2 2 2 2 0
1 × socket / 1 × plug 90°	2000	0 1 1 - 9 2 2 2 2 4 0
1 × socket / 1 × plug 90°	4000	0 1 1 - 9 2 2 2 2 8 0

MOUNTING

TYPE	ORDER CODE
mounting tool	0 1 1 - 9 1 9 0 0 0 0

INSET POWER is the current consumption excluding any ballast
LUMINOUS FLUX value calculated for CRI ≥ 95, medium lens, colour black

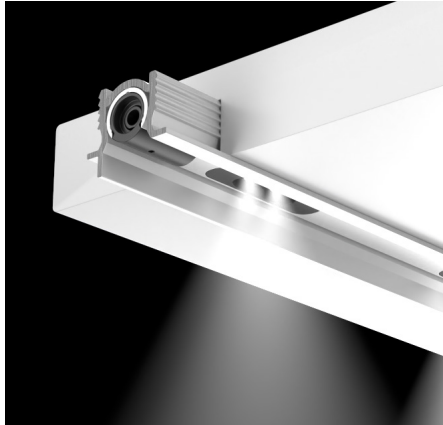
Channel overview



Channel 90 recessed

EN The mounting channel for FINA modules offers an elegant solution for installation. Ideal for applications with a 90° beam direction onto the lower shelf.

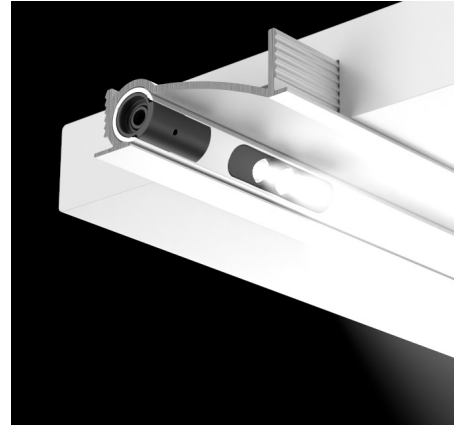
DE Der Montagekanal für FINA-Module bietet eine elegante Lösung für den Einbau. Ideal für Anwendungen mit einer Ausstrahlrichtung von 90° auf das untere Fach.



Channel 90 anti-glare

EN The mounting channel for FINA modules offers an elegant solution for installation. The anti-glare lip enables glare-free light in show-cases at the viewer's eye level and is ideal for applications with a beam angle of 90° onto the lower shelf.

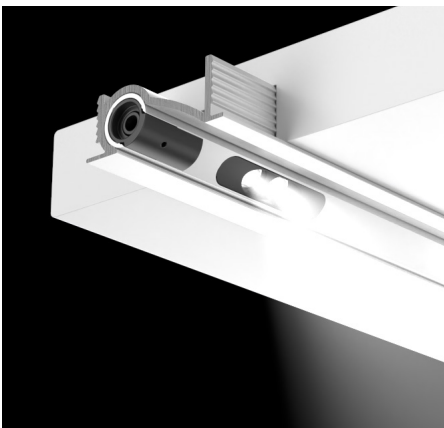
DE Der Montagekanal für FINA-Module bietet eine elegante Lösung für den Einbau. Die Anti Glare Blendlippe ermöglicht blendfreies Licht in Vitrinen in Augenhöhe des Betrachters und ist ideal für Anwendungen mit einer Ausstrahlrichtung von 90° auf das untere Fach.



Channel 60 recessed

EN The mounting channel for FINA modules offers an elegant solution for installation. Ideal for applications with a beam angle of 60° to the bottom of the compartment and for compartment niches with the same compartment height and depth.

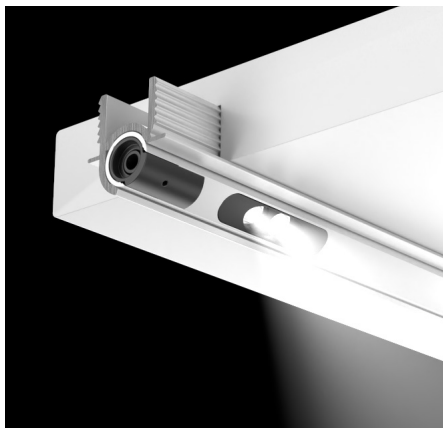
DE Der Montagekanal für FINA-Module bietet eine elegante Lösung für den Einbau. Ideal für Anwendungen mit einer Ausstrahlrichtung von 60° auf das untere Fach sowie von Fachnischen mit gleicher Fachhöhe und -tiefe.



Channel 45 recessed

EN The mounting channel for FINA modules offers an elegant solution for installation. Ideal for applications with a beam angle of 45° to the bottom of the compartment as well as for compartment niches with a low height. The ratio of compartment height to depth is 1:2.

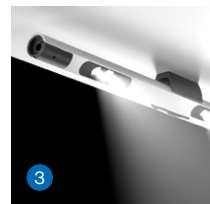
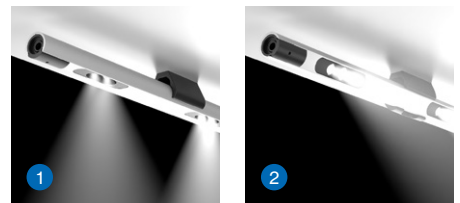
DE Der Montagekanal für FINA-Module bietet eine elegante Lösung für den Einbau. Ideal für Anwendungen mit einer Ausstrahlrichtung von 45° auf das Fach untere sowie von Fachnischen mit geringer Höhe. Das Verhältnis der Fachhöhe zur -tiefe ist 1:2.



Channel 45 jut-out

EN The jut-out mounting channel ensures ideal illumination of the lower compartment without shadowing. Ideal for applications with a beam direction of 45° onto the lower shelf as well as shelf niches with a low height.

DE Der jut-out Montagekanal sorgt für eine ideale Ausleuchtung des unteren Faches ohne Abschattungen. Ideal für Anwendungen mit einer Ausstrahlrichtung von 45° auf das untere Fach sowie von Fachnischen mit geringer Höhe.



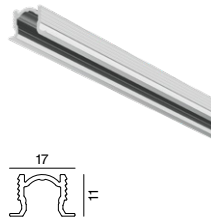
Mounting clip 90/60/45 surface

EN Mounting clips for NANO modules for surface mounting. ① Beam direction of 90° onto the bottom shelf. ② Beam direction of 60° onto the bottom shelf and for niches with the same shelf height and depth. ③ Emission direction of 45° onto the bottom shelf and for niches with a low height. The ratio of compartment height to depth is 1:2.

DE Montageclips für NANO-Module zur Anbaumontage. ① Ausstrahlrichtung von 90° auf das untere Fach. ② Ausstrahlrichtung von 60° auf das untere Fach und für Fachnischen mit gleicher Fachhöhe und -tiefe. ③ Ausstrahlrichtung von 45° auf das untere Fach und für Fachnischen mit geringer Höhe. Das Verhältnis der Fachhöhe zur -tiefe ist 1:2.

Order options

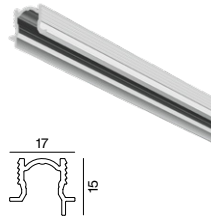
MATERIAL COLOUR	
● white aluminium RAL 9006	6
● black RAL 9021	8



Mounting channels

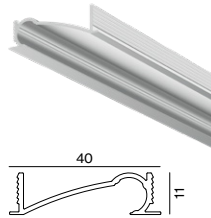
CHANNEL 90

L (mm)	ORDER CODE
230	011-910020
430	011-910030
630	011-910040
830	011-910050
1030	011-910060
1230	011-910070
custom cut	E84800



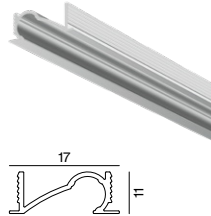
CHANNEL 90 ANTI-GLARE

L (mm)	ORDER CODE
230	011-910120
430	011-910130
630	011-910140
830	011-910150
1030	011-910160
1230	011-910170
custom cut	E84810



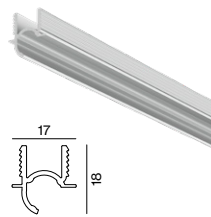
CHANNEL 60

L (mm)	ORDER CODE
230	011-910220
430	011-910230
630	011-910240
830	011-910250
1030	011-910260
1230	011-910270
custom cut	E84820



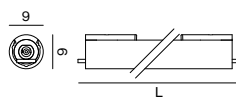
CHANNEL 45

L (mm)	ORDER CODE
230	011-910320
430	011-910330
630	011-910340
830	011-910350
1030	011-910360
1230	011-910370
custom cut	E84830



CHANNEL 45 JUT-OUT

L (mm)	ORDER CODE
230	011-910420
430	011-910430
630	011-910440
830	011-910450
1030	011-910460
1230	011-910470
custom cut	E84840



Accessories

BLIND INSETS

L (mm)	ORDER CODE
200	011-910920
400	011-910930
600	011-910940
800	011-910950
1000	011-910960
1200	011-910970

MOUNTING CLIP

TYPE	ORDER CODE
clip 90 surface	011-910000
clip 60 surface	011-910200
clip 45 surface	011-910300

