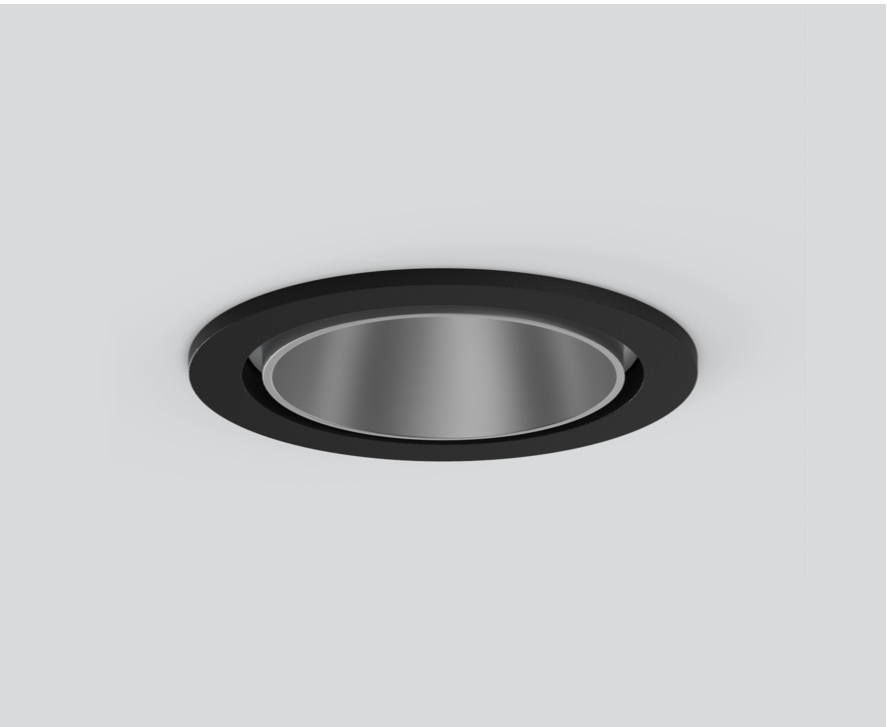


SASSO 60 round downlight

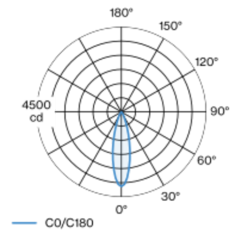
trim

048-2602014M 048-2696318 002-90771



Round recessed spotlight in die-cast aluminium; 1 lamp; surface matt silver; installation without tools in mounting set due to patented ball catch system; round installation housing; with trim jet black; suitable for ceiling thickness of 2-25 mm; passive cooling of the LEDs through improved heat sink geometry; with COB (Chip on Board) technology for maximum efficiency; no appearance of multiple shadows; light colour 3000 K; binning initial MacAdam ≤ 2 SDCM; CRI ≥ 90 ; min. 80% of luminous flux after 50000 operating hours; energy efficient LEDs with high CRI; incl. high quality lens system; precise radiation characteristic with 26° beam; UGR ≤ 16 ; degree of protection from below IP44 (from above IP20); PC2; 220-240 V; incl. converter, non dimmable; light source replaceable by an authorized professional; control gear replaceable by an authorized professional;

Light distribution



Product drawing



Project / Type	
Notes	
Count / Date	



General

Ceiling , Recessed	
rotation 360°	
matt silver	
Mounting set jet black	
front IP44 , back IP20	
1080 lm	
fixture 102 lm/W ¹	

LED

3000 K	
CRI ≥ 90	
L80 / 50000 h	
initial MacAdam ≤ 2 SDCM	
R _g : 99 , R _r : 90 , R _{t(1-5)} : 87	
MR 0.6	
MDER 0.54	

Optical

medium	
beam angle 26°	
UGR ≤ 16	
PstLM ≤ 1.0 ²	
SVM ≤ 0.4 ²	

Electrical

non DIM	
220-240 V	
system 12.5 W	
fixture 10.6 W	
36 Vf	
300 mA	
PC2	

Physical

trim	
diameter 80 mm	
height 48 mm	
0.2 kg	

Cutout

diameter 73 mm	
min. ceiling thickness 2 mm	
max. ceiling thickness 25 mm	
recessed depth 60 mm	

¹ incl. consideration of optical losses & internal control unit losses
² Value of containing product at full load (undimmed)

Installation instructions



Lighting calculator

