

# SASSO 100 square wallwasher/floor

trim 2 lamps

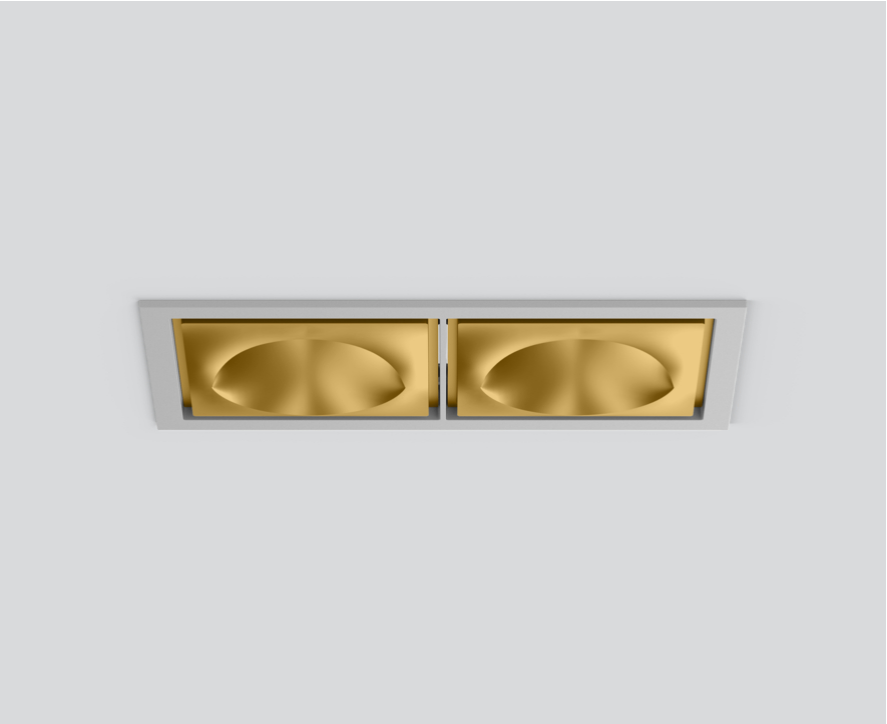
048-2750919W 048-279931G 002-90789



Project / Type \_\_\_\_\_

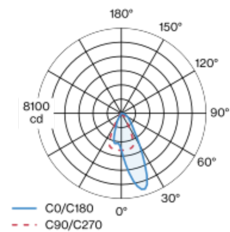
Notes \_\_\_\_\_

Count / Date \_\_\_\_\_

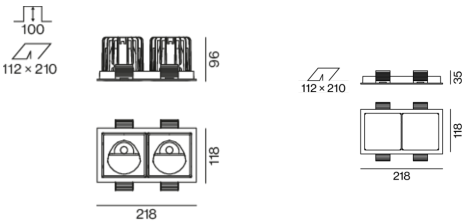


Recessed square spotlight in die-cast aluminium; 2 lamps; surface gold; installation without tools in mounting set due to patented ball catch system; rectangular installation housing; with trim white aluminium; suitable for ceiling thickness of 2-25 mm; passive cooling of the LEDs through improved heat sink geometry; with COB (Chip on Board) technology for maximum efficiency; no appearance of multiple shadows; light colour 2700 K; binning initial MacAdam  $\leq 2$  SDCM; CRI  $\geq 90$ ; min. 80% of luminous flux after 50000 operating hours; energy efficient LEDs with high CRI; with specially computed, asymmetrical reflector for homogeneous lighting intensity; high quality reflector with micro-faceted, aluminum-vaporised surface; PC2; 220-240 V; incl. DALI-2 converter; through wiring connection box, 3-pole or 5-pole, available as an accessory; accessories are listed separately; light source replaceable by an authorized professional; control gear replaceable by an authorized professional;

## Light distribution



## Product drawing



## General

Ceiling , Recessed \_\_\_\_\_

gold , RAL 260-M<sup>1</sup> \_\_\_\_\_

Mounting set white aluminium \_\_\_\_\_

IP20 \_\_\_\_\_

5140 lm \_\_\_\_\_

fixture 120 lm/W<sup>2</sup> \_\_\_\_\_

## LED

2700 K \_\_\_\_\_

CRI  $\geq 90$  \_\_\_\_\_

L80 / 50000 h \_\_\_\_\_

initial MacAdam  $\leq 2$  SDCM \_\_\_\_\_

R<sub>g</sub>: 97 , R<sub>f</sub>: 91 , R<sub>(1-15)</sub>: 87 \_\_\_\_\_

MR 0.52 \_\_\_\_\_

MDER 0.47 \_\_\_\_\_

## Optical

wallwasher floor \_\_\_\_\_

PstLM  $\leq 1.0$ <sup>3</sup> \_\_\_\_\_

SVM  $\leq 0.4$ <sup>3</sup> \_\_\_\_\_

## Electrical

DALI-2 \_\_\_\_\_

220-240 V \_\_\_\_\_

system 50 W \_\_\_\_\_

fixture 21.5 W \_\_\_\_\_

36 Vf \_\_\_\_\_

650 mA \_\_\_\_\_

fixture 43 W \_\_\_\_\_

PC2 \_\_\_\_\_

## Physical

trim \_\_\_\_\_

length 218 mm \_\_\_\_\_

width 118 mm \_\_\_\_\_

height 96 mm \_\_\_\_\_

0.62 kg \_\_\_\_\_

## Cutout

length 210 mm \_\_\_\_\_

width 112 mm \_\_\_\_\_

min. ceiling thickness 2 mm \_\_\_\_\_

max. ceiling thickness 25 mm \_\_\_\_\_

recessed depth 100 mm \_\_\_\_\_

<sup>1</sup> RAL code

<sup>2</sup> incl. consideration of optical losses & internal control unit losses

<sup>3</sup> Value of containing product at full load (undimmed)

## Installation instructions



## Lighting calculator

