

SASSO 100 round downlight

trim 2 lamps

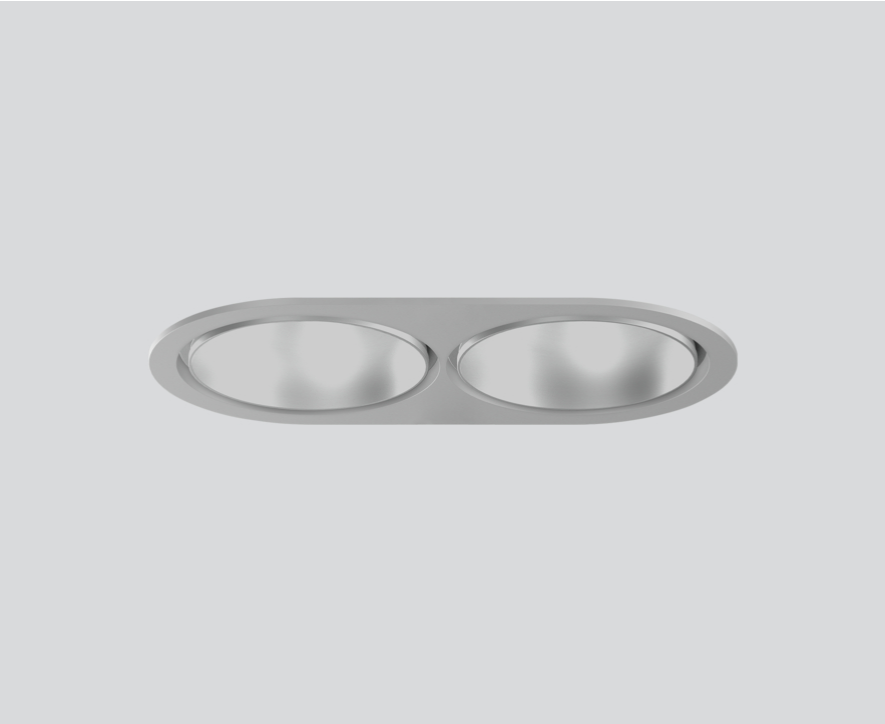
048-2700214W 048-279831G 002-90780



Project / Type _____

Notes _____

Count / Date _____



220-240V

IP20
IP44

X-PERT

X-PERT

General

Ceiling , Recessed

matt silver

Mounting set white aluminium

front IP44 , back IP20

4860 lm

LED

3500 K

CRI ≥ 90

L80 / 50000 h

initial MacAdam ≤ 2 SDCM

R_g: 99 , R_r: 90 , R_{t(1-15)}: 89

MR 0.7

MDER 0.64

Optical

wide flood

beam angle 65°

≥65° <1500 cd/m²

Electrical

non DIM

system 52 W

inset 22.7 W

36 Vf

650 mA

total insets 45 W

PC2 220-240V

system 93 lm/W¹

inset 107 lm/W²

Physical

trim

length 218 mm

width 118 mm

height 75 mm

0.56 kg

Cutout

diameter 105 mm

length 205 mm

width 105 mm

min. ceiling thickness 2 mm

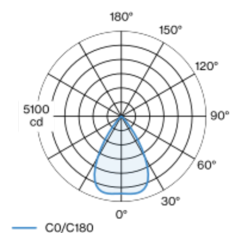
max. ceiling thickness 25 mm

recessed depth 100 mm

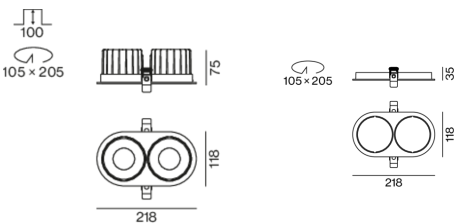
¹ incl. optical losses and the efficiency of the operating device (converter)

² incl. optical losses

Light distribution



Product drawing



Installation instructions



Lighting calculator

