

SASSO 60 round downlight

trim

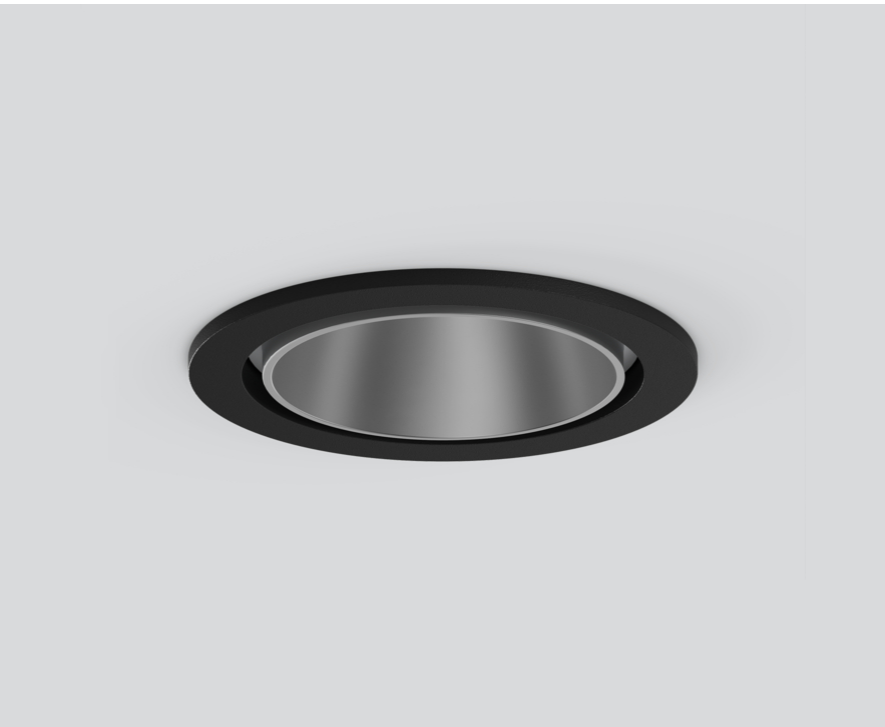
048-2602914F 048-2696318 002-90742



Project / Type

Notes

Count / Date



General

Ceiling , Recessed

rotation 360°

matt silver

Mounting set jet black

front IP44 , back IP20

888 lm

LED

2700 K

CRI ≥ 90

L80 / 50000 h

initial MacAdam ≤ 2 SDCM

R_g: 97 , R_f: 91 , R_{1-15}: 87

MR 0.52

MDER 0.47

Optical

flood

beam angle 42°

UGR < 16 , ≥65° <1500 cd/m²

P_{stLM} ≤ 1.0¹

SVM ≤ 0.4¹

Electrical

non DIM

system 10.2 W

inset 8.7 W

36 Vf

250 mA

PC2 220-240V

system 87 lm/W²

inset 102 lm/W³

Physical

trim

diameter 80 mm

height 48 mm

0.2 kg

Cutout

diameter 73 mm

min. ceiling thickness 2 mm

max. ceiling thickness 25 mm

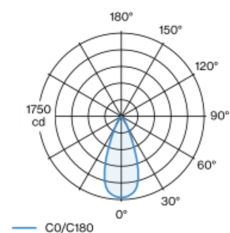
recessed depth 60 mm

¹ Value of containing product at full load (undimmed)

² incl. optical losses and the efficiency of the operating device (converter)

³ incl. optical losses

Light distribution



Product drawing

