

# SASSO 60 round adjustable

trim 2 lamps

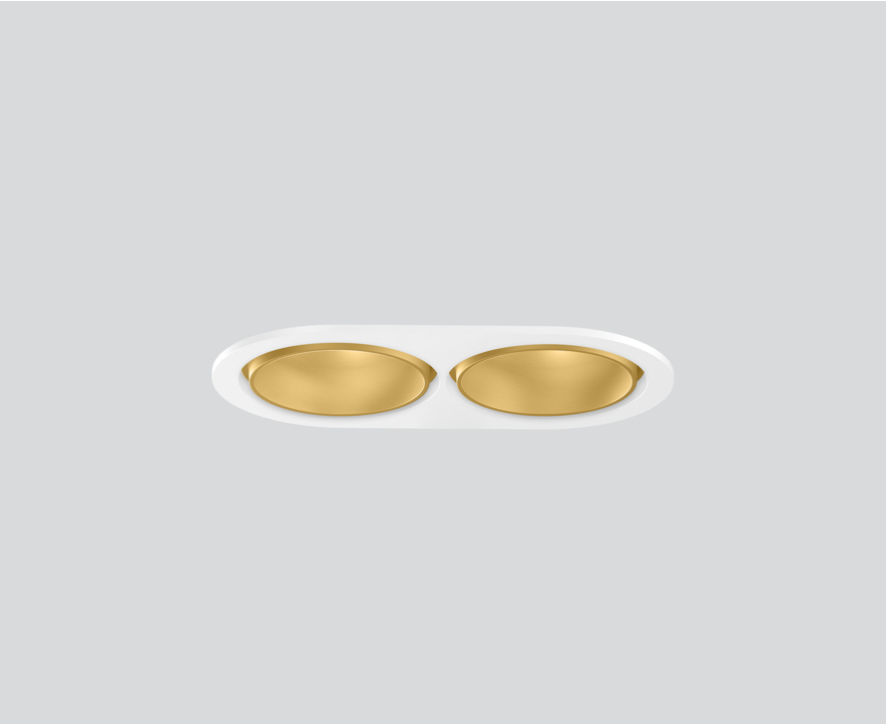
048-2622019M 048-2698317 002-90742



Project / Type

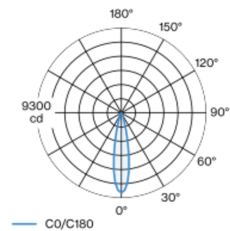
Notes

Count / Date

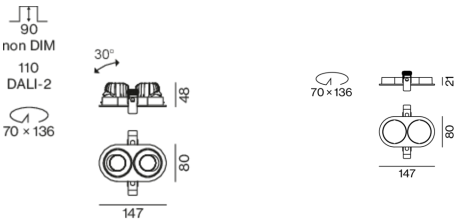


Round recessed spotlight in die-cast aluminium; 2 lamps; surface gold; 360° rotatable and 30° tiltable; installation without tools in mounting set due to patented ball catch system; oval installation housing; with trim traffic white; suitable for ceiling thickness of 2-25 mm; passive cooling of the LEDs through improved heat sink geometry; with COB (Chip on Board) technology for maximum efficiency; no appearance of multiple shadows; light colour 3000 K; binning initial MacAdam  $\leq 2$  SDCM; CRI  $\geq 90$ ; min. 80% of luminous flux after 50000 operating hours; energy efficient LEDs with high CRI; incl. high quality lens system; precise radiation characteristic with 21° beam; UGR  $\leq 16$ ; VDU compatible workplace luminaire according to DIN EN 12464-1; luminance above 65°  $\leq 3000$  cd/m<sup>2</sup>; degree of protection from below IP40 (from above IP20); PC2 220-240V; incl. converter, non dimmable; light source replaceable by an authorized professional; control gear replaceable by an authorized professional;

## Light distribution



## Product drawing



## General

Ceiling , Recessed  
tilt max 30°  
rotation 360°  
gold , RAL260-M <sup>1</sup>  
Mounting set traffic white  
front IP40 , back IP20  
1610 lm

## LED

3000 K  
CRI  $\geq 90$   
L80 / 50000 h  
initial MacAdam  $\leq 2$  SDCM  
R<sub>g</sub>: 99 , R<sub>r</sub>: 90 , R<sub>t(1-15)</sub>: 87  
MR 0.6  
MDER 0.54

## Optical

medium  
beam angle 21°  
UGR  $< 16$  ,  $\geq 65^\circ < 3000$  cd/m<sup>2</sup>  
PstLM  $\leq 1.0$  <sup>2</sup>  
SVM  $\leq 0.4$  <sup>2</sup>

## Electrical

non DIM  
system 20.5 W  
inset 8.7 W  
36 Vf  
250 mA  
total insets 17.4 W  
PC2 220-240V  
system 79 lm/W<sup>3</sup>  
inset 92 lm/W<sup>4</sup>

## Physical

trim  
length 147 mm  
width 80 mm  
height 48 mm  
0.28 kg

## Cutout

diameter 70 mm  
length 70 mm  
width 136 mm  
min. ceiling thickness 2 mm  
max. ceiling thickness 25 mm  
recessed depth 90 mm

<sup>1</sup> RAL code <sup>2</sup> Value of containing product at full load (undimmed)  
<sup>3</sup> incl. optical losses and the efficiency of the operating device (converter)  
<sup>4</sup> incl. optical losses





# SASSO 60 round adjustable

trim 2 lamps

048-2622019M 048-2698317 002-90742



Project / Type

Notes

Count / Date

Installation instructions



Lighting calculator

