

SASSO 60 round adjustable

trim 2 lamps

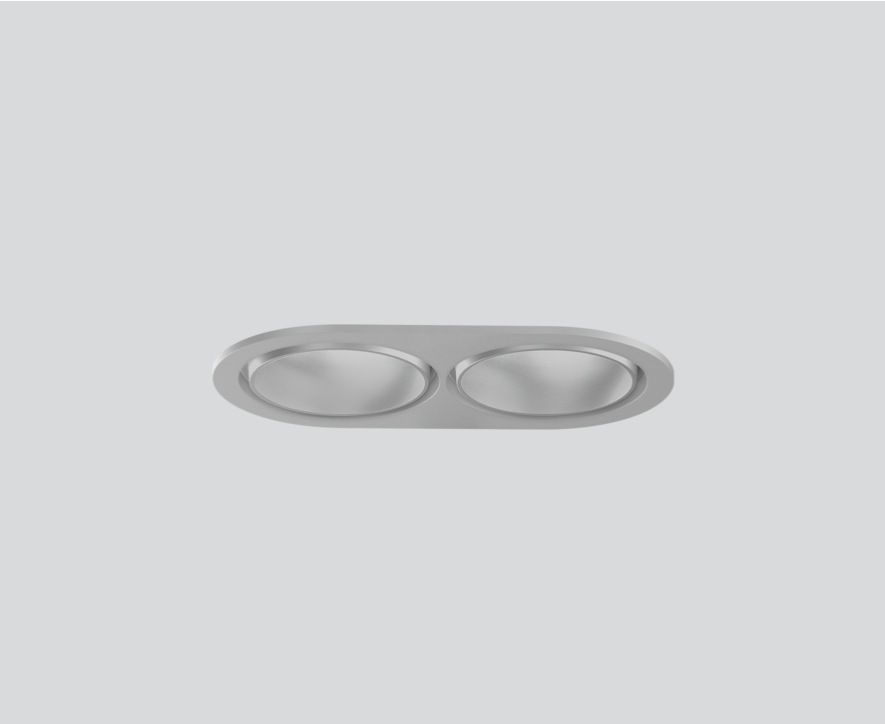
048-2622214S 048-269831G 002-90742



Project / Type

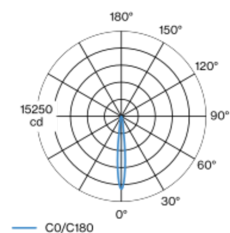
Notes

Count / Date

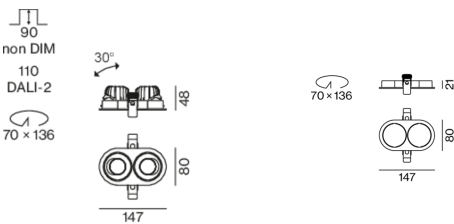


Round recessed spotlight in die-cast aluminium; 2 lamps; surface matt silver; 360° rotatable and 30° tiltable; installation without tools in mounting set due to patented ball catch system; oval installation housing; with trim white aluminium; suitable for ceiling thickness of 2-25 mm; passive cooling of the LEDs through improved heat sink geometry; with COB (Chip on Board) technology for maximum efficiency; no appearance of multiple shadows; light colour 3500 K; binning initial MacAdam ≤ 2 SDCM; CRI ≥ 90 ; energy efficient LEDs with high CRI; incl. high quality lens system; precise radiation characteristic with 12° beam; UGR ≤ 16 ; VDU compatible workplace luminaire according to DIN EN 12464-1; luminance above 65° ≤ 1500 cd/m²; degree of protection from below IP40 (from above IP20); PC2 220-240V; incl. converter, non dimmable; light source replaceable by an authorized professional; control gear replaceable by an authorized professional;

Light distribution



Product drawing



General

Ceiling , Recessed

tilt max 30°

rotation 360°

matt silver

Mounting set white aluminium

front IP40 , back IP20

1190 lm

LED

3500 K

CRI ≥ 90

initial MacAdam ≤ 2 SDCM

R_g: 99 , R_f: 90 , R₍₁₋₁₅₎: 87

MR 0.6

MDER 0.54

Optical

spot

beam angle 12°

UGR < 16 , $\geq 65^\circ$ <1500 cd/m²

PstLM ≤ 1.0 ¹

SVM ≤ 0.4 ¹

Electrical

non DIM

20.8 W

inset 8.8 W

36 Vf

250 mA

total insets 17.7 W

PC2 220-240V

57 lm/W

inset 67 lm/W

Physical

trim

length 147 mm

width 80 mm

height 48 mm

0.28 kg

Cutout

diameter 70 mm

length 70 mm

width 136 mm

min. ceiling thickness 2 mm

max. ceiling thickness 25 mm

recessed depth 90 mm

¹ Value of containing product at full load (undimmed)



SASSO 60 round adjustable

trim 2 lamps

048-2622214S 048-269831G 002-90742



Project / Type

Notes

Count / Date

Installation instructions



Lighting calculator



SASSO 60 round adjustable

trim 2 lamps

048-2622214S 048-269831G 002-90742



Project / Type

Notes

Count / Date

Circuit Breaker Types

| Automatic Circuit Breaker Type | Number of Fixtures |
|--------------------------------|--------------------|
| B10 | 57 |
| B13 | 75 |
| B16 | 92 |
| B20 | 115 |
| C10 | 57 |
| C13 | 75 |
| C16 | 92 |
| C20 | 115 |

Components

MOUNTING SET with trim 2 lamps

| | | | |
|-----------------------------------|---------------------------|-------------------------|----------------------------------|
| TYPE for intermediate ceilings | COLOUR white aluminium | L·W·H (MM) 147-80-21 | ARTICLE NUMBER(S) 048-269831G |
|-----------------------------------|---------------------------|-------------------------|----------------------------------|



POWER SUPPLY

| | | |
|--------------|------------------------|--------------------------------|
| TYPE 10 W | L·W·H (MM) 65-39-20 | ARTICLE NUMBER(S) 002-90742 |
|--------------|------------------------|--------------------------------|



Mounting accessories

PRIMED CONCRETE MOUNTING HOUSING

| | | |
|---------------------------|---------------------------|----------------------------------|
| COLOUR white aluminium | L·W·H (MM) 614-307-120 | ARTICLE NUMBER(S) 048-2695110 |
|---------------------------|---------------------------|----------------------------------|



Optional electrical accessories

DIN RAIL POWER SUPPLY

| | | |
|---------------|------------------------|----------------------------------|
| TYPE 160 W | L·W·H (MM) 72-90-63 | ARTICLE NUMBER(S) 005-6520210 |
|---------------|------------------------|----------------------------------|



DIN RAIL LED DRIVER

| | | |
|--|------------------------|----------------------------------|
| TYPE DALI-2 200-1050 mA 2 x 42W | L·W·H (MM) 36-88-59 | ARTICLE NUMBER(S) 005-6121030 |
|--|------------------------|----------------------------------|

