

FINA SUPPORT opal 30°

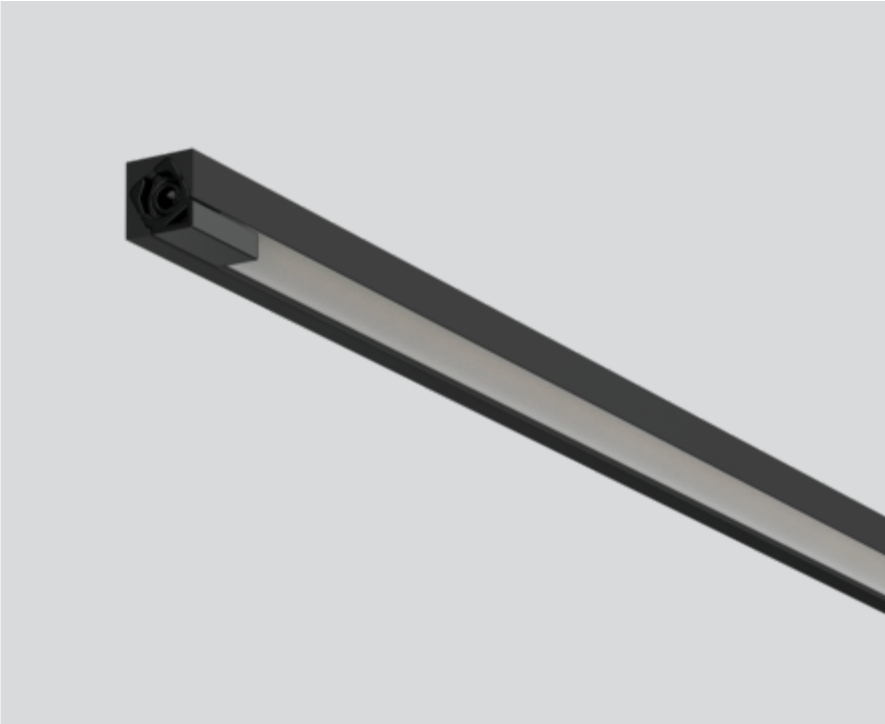
011-13040180



Project / Type

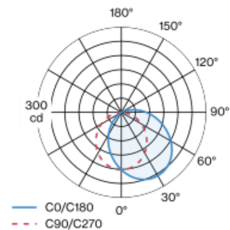
Notes

Count / Date



Miniature rectangular lamp made of aluminium; angular design; surface lacquered in black; plug and play electrical connector system for toolless mounting; different mechanical and electrical poles available - for flexible system design (available as an accessory); completely homogeneously illuminated, satinised PMMA cover; light colour 3000 K; binning initial MacAdam ≤ 3 SDCM; CRI ≥ 97 ; min. 85% of luminous flux after 50000 operating hours; energy efficient LEDs with high CRI; light inset rotatable; degree of protection IP20; PC3 24V; accessories are listed separately;

Light distribution



Product drawing



General

Showcase , Standing

rotation 360°

black , RAL9021 ¹

1140 lm/m

IP20

Interior

651 lm

LED

3000 K

CRI ≥ 97

L85 / 50000 h

initial MacAdam ≤ 3 SDCM

Optical

Opal

opal

Electrical

excl. driver

24 V

11.6 W

PC3 24V

56 lm/W

20 W/m

24 V

Physical

length 600 mm

width 9 mm

height 9 mm

¹ RAL code

Installation instructions

