

FINA SUPPORT lead 30°

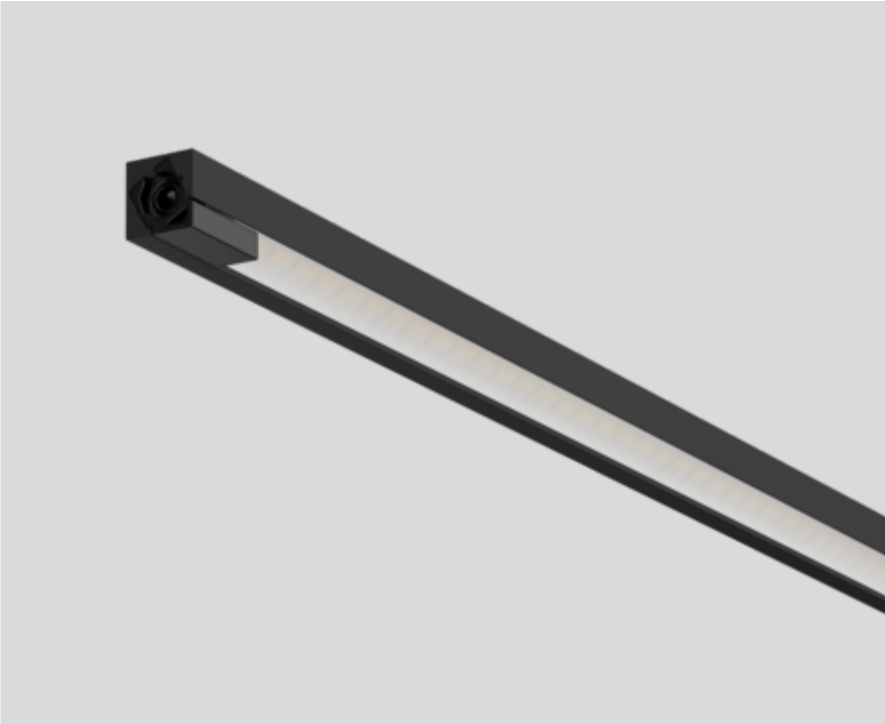
011-1307118A



Project / Type

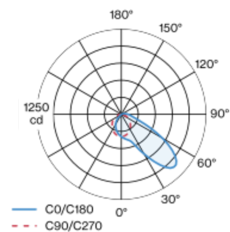
Notes

Count / Date



Miniature rectangular lamp made of aluminium; angular design; surface lacquered in black; plug and play electrical connector system for toolless mounting; different mechanical and electrical poles available - for flexible system design (available as an accessory); specially computed foil for asymmetrical light distribution; light colour 4000 K; binning initial MacAdam ≤ 3 SDCM; CRI ≥ 97 ; min. 85% of luminous flux after 50000 operating hours; energy efficient LEDs with high CRI; light inset rotatable; degree of protection IP20; PC3 24V; accessories are listed separately;

Light distribution



Product drawing



General

Showcase , Standing

rotation 360°

black , RAL9021¹

1310 lm/m

IP20

Interior

1530 lm

LED

4000 K

CRI ≥ 97

L85 / 50000 h

initial MacAdam ≤ 3 SDCM

Optical

lead

Electrical

excl. driver

24 V

21.8 W

PC3 24V

70 lm/W

19 W/m

24 V

Physical

length 1200 mm

width 9 mm

height 9 mm

¹ RAL code

Installation instructions



FINA SUPPORT lead 30°

011-1307118A



Project / Type

Notes

Count / Date

Maintenance Factors

Operating Time [h]	10 000	20 000	30 000	40 000	50 000
LLMF	0.979	0.955	0.931	0.908	0.885
LSF	1	1	1	1	1

MF	LMF × RSMF × LLMF × LSF	RSMF ^a	Room Surface Maintenance Factor
MF	Maintenance Factor	LLMF	Lamp Lumens Maintenance Factor
LMF ^a	Luminaire Maintenance Factor	LSF	Lamp Survival Faktor

^a According to "CIE 97, Maintenance of indoor electric lighting systems", 2005, ISBN 3-900-734-34-8. The values must be determined by the planner.

Mounting accessories

MOUNTING POLE L

TYPE	COLOUR	ARTICLE NUMBER(S)
mechanical 180	white aluminium	011-9121116
mechanical 180	black	011-9121118
mechanical / electrical 180	white aluminium	011-9121126
mechanical / electrical 180	black	011-9121128
feeder / mechanical 180	white aluminium	011-9121136
feeder / mechanical 180	black	011-9121138
mechanical 200	white aluminium	011-9121216
mechanical 200	black	011-9121218
mechanical / electrical 200	white aluminium	011-9121226
mechanical / electrical 200	black	011-9121228
feeder / mechanical 200	white aluminium	011-9121236
feeder / mechanical 200	black	011-9121238
mechanical 300	white aluminium	011-9121316
mechanical 300	black	011-9121318
mechanical / electrical 300	white aluminium	011-9121326
mechanical / electrical 300	black	011-9121328
feeder / mechanical 300	white aluminium	011-9121336
feeder / mechanical 300	black	011-9121338



Mounting accessories

MOUNTING POLE T

TYPE	COLOUR	ARTICLE NUMBER(S)
mechanical 180	white aluminium	011-9122116
mechanical 180	black	011-9122118
mechanical / electrical 180	white aluminium	011-9122126
mechanical / electrical 180	black	011-9122128
feeder / mechanical 180	white aluminium	011-9122136
feeder / mechanical 180	black	011-9122138
mechanical 200	white aluminium	011-9122216
mechanical 200	black	011-9122218
mechanical / electrical 200	white aluminium	011-9122226
mechanical / electrical 200	black	011-9122228
feeder / mechanical 200	white aluminium	011-9122236
feeder / mechanical 200	black	011-9122238
mechanical 300	white aluminium	011-9122316
mechanical 300	black	011-9122318
mechanical / electrical 300	white aluminium	011-9122326
mechanical / electrical 300	black	011-9122328
feeder / mechanical 300	white aluminium	011-9122336
feeder / mechanical 300	black	011-9122338



[011-1307118A] The technical data represent rated values for an ambient temperature of 25°C. The data values for the luminous flux are initially subject to a tolerance of +/- 10%, those for the electrical connected load are initially subject to a tolerance of +/- 10%, and those for the colour temperature are initially subject to a tolerance of +/- 150 K. No liability is assumed for typographical or printing errors. The general terms and conditions of XAL GmbH apply.
© XAL GmbH · Auer-Welsbach-Gasse 36 · 8055 Graz · Austria · www.xal.com

30.06.2024

FINA SUPPORT lead 30°

011-1307118A



Project / Type

Notes

Count / Date

Mounting accessories

MOUNTING POLE Y

TYPE	COLOUR	ARTICLE NUMBER(S)
mechanical 180	white aluminium	011-9123116
mechanical / electrical 180	white aluminium	011-9123126
mechanical / electrical 180	black	011-9123128
feeder / mechanical 180	white aluminium	011-9123136
feeder / mechanical 180	black	011-9123138
mechanical 200	white aluminium	011-9123216
mechanical 200	black	011-9123218
mechanical / electrical 200	white aluminium	011-9123226
mechanical / electrical 200	black	011-9123228
feeder / mechanical 200	white aluminium	011-9123236
feeder / mechanical 200	black	011-9123238
mechanical 300	white aluminium	011-9123316
mechanical 300	black	011-9123318
mechanical / electrical 300	white aluminium	011-9123326
mechanical / electrical 300	black	011-9123328
feeder / mechanical 300	white aluminium	011-9123336
feeder / mechanical 300	black	011-9123338



Electrical accessories

POWER SUPPLY 24V EU

L·W·H (MM)	ARTICLE NUMBER(S)
130-43-30	011-9212110
195-43-30	011-9212210
220-43-30	011-9212310
130-43-30	011-9212130
195-43-30	011-9212230
220-43-30	011-9212330



POWER SUPPLY 24V UL

L·W·H (MM)	ARTICLE NUMBER(S)
153-41-32	011-9282110
210-40-30	011-9282210
250-40-30	011-9282310
176-45-32	011-9282320
176-45-32	011-9282330



Electrical accessories

EXTENSION CABLE

TYPE	ARTICLE NUMBER(S)
1 × socket / 1 × plug	011-9222120
1 × socket / 1 × plug	011-9222140
1 × socket / 1 × plug	011-9222180

