

VARO 110 S

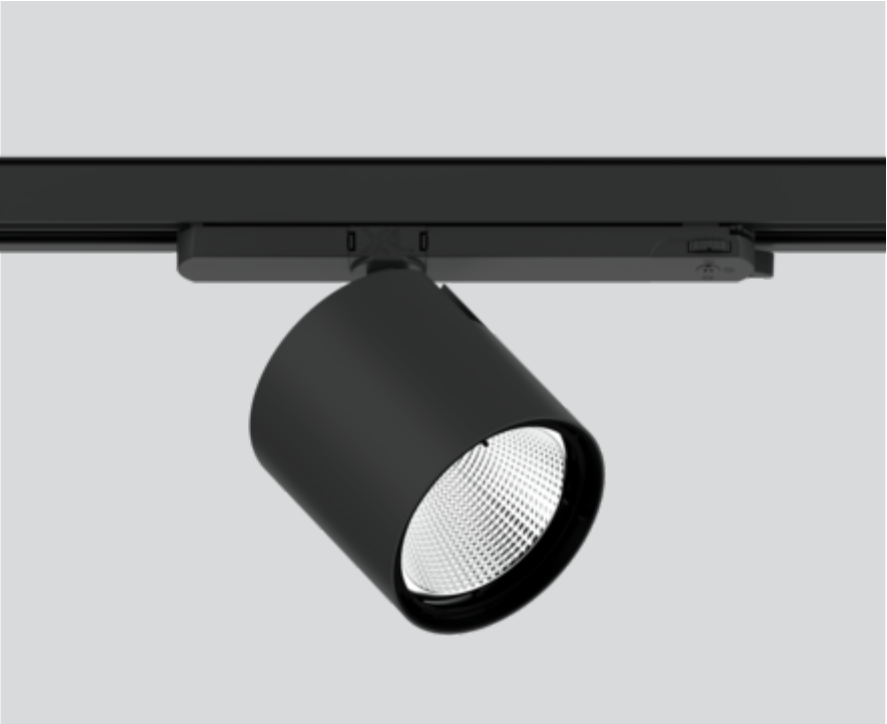
180-6530018F



Project / Type

Notes

Count / Date



General

Ceiling , Track

tilt max 90°

rotation 355°

black , RAL9005 ¹

IP20

3200 lm

LED

3000 K

CRI ≥ 90

L85 / 50000 h

initial MacAdam ≤ 3 SDCM

R_g: 99 , R_f: 92 , R_{t(1-5)}: 93

MR 0.61

MDER 0.55

Optical

flood

beam angle 40°

Electrical

non DIM

23.4 W

PC2 220-240V

137 lm/W

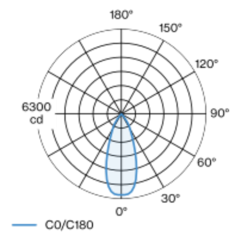
Physical

diameter 110 mm

height 110 mm

¹ RAL code

Light distribution



flood 40°

h (m)	EO ⁹ (lx)	ø (m)
1	6010	0.73
2	1500	1.46
3	670	2.18
4	380	2.91
5	240	3.64

Product drawing



Installation instructions



Lighting calculator



[180-6530018F] The technical data represent rated values for an ambient temperature of 25°C. The data values for the luminous flux are initially subject to a tolerance of +/- 10%, those for the electrical connected load are initially subject to a tolerance of +/- 10%, and those for the colour temperature are initially subject to a tolerance of +/- 150 K. No liability is assumed for typographical or printing errors. The general terms and conditions of XAL GmbH apply.

© XAL GmbH · Auer-Welsbach-Gasse 36 · 8055 Graz · Austria · www.xal.com