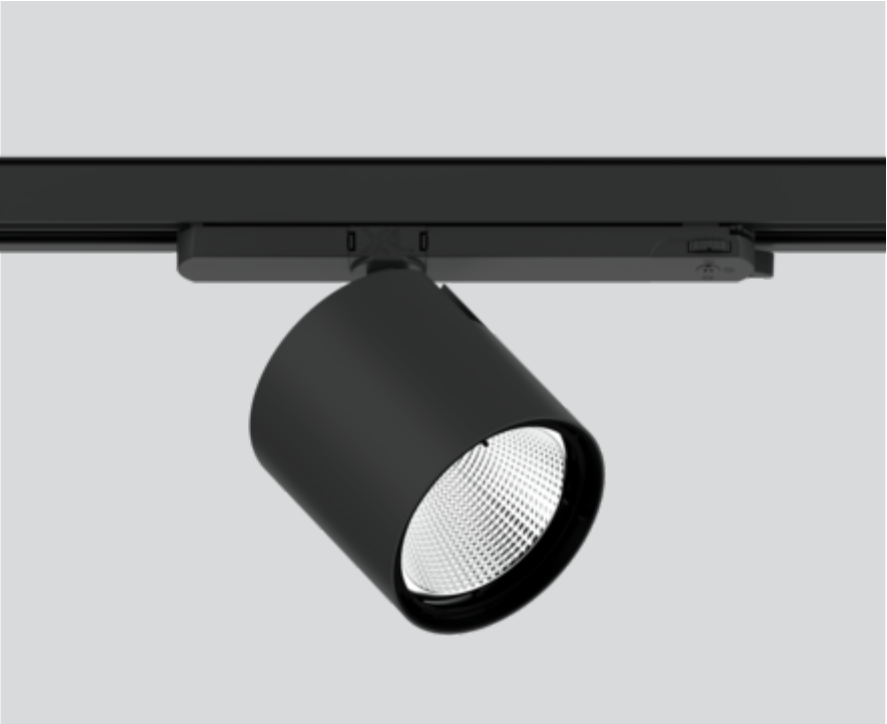


# VARO 110 S

180-6531238S



Project / Type
Notes
Count / Date



220-240V
X-PERT
X-PERT

## General

Ceiling , Track
tilt max 90°
rotation 355°
black , RAL9005 <sup>1</sup>
IP20
4500 lm

## LED

3500 K
CRI ≥ 90
L85 / 50000 h
initial MacAdam ≤ 3 SDCM
R <sub>g</sub> : 97 , R <sub>f</sub> : 90 , R <sub>(1-15)</sub> : 93
MR 0.73
MDER 0.66

## Optical

spot
beam angle 14°

## Electrical

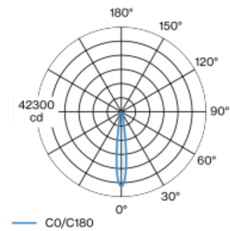
DALI-2
36 W
PC2 220-240V
125 lm/W

## Physical

diameter 110 mm
height 110 mm

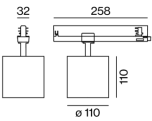
<sup>1</sup> RAL code

## Light distribution



spot 14°			
h (m)	EO° (lx)	ø (m)	
1	37100	0.25	
2	9300	0.50	
3	4100	0.75	
4	2300	1.00	
5	1500	1.25	

## Product drawing



## Installation instructions



## Lighting calculator



# VARO 110 S

180-6531238S



Project / Type

Notes

Count / Date

## Maintenance Factors

Operating Time [h]	10 000	20 000	30 000	40 000	50 000
LLMF	0.977	0.95	0.923	0.897	0.872
LSF	1	1	1	1	1

MF

LMF × RSMF × LLMF × LSF

MF

Maintenance Factor

LMF<sup>a</sup>

Luminaire Maintenance Factor

RSMF<sup>a</sup>

Room Surface Maintenance Factor

LLMF

Lamp Lumens Maintenance Factor

LSF

Lamp Survival Faktor

<sup>a</sup> According to "CIE 97, Maintenance of indoor electric lighting systems", 2005, ISBN 3-900-734-34-8. The values must be determined by the planner.

## Optical accessories

### HONEYCOMB LOUVER

Ø (MM)	ARTICLE NUMBER(S)
106	080-6501118

### WIDE FLOOD LENS

Ø (MM)	ARTICLE NUMBER(S)
106	080-6502110W

### OVAL LENS

Ø (MM)	ARTICLE NUMBER(S)
106	080-6502210

### SNOOT

TYPE	Ø (MM)	ARTICLE NUMBER(S)
short	97	080-6503118
medium	97	080-6503218
angle	97	080-6503318

