

VARO 110 S

track

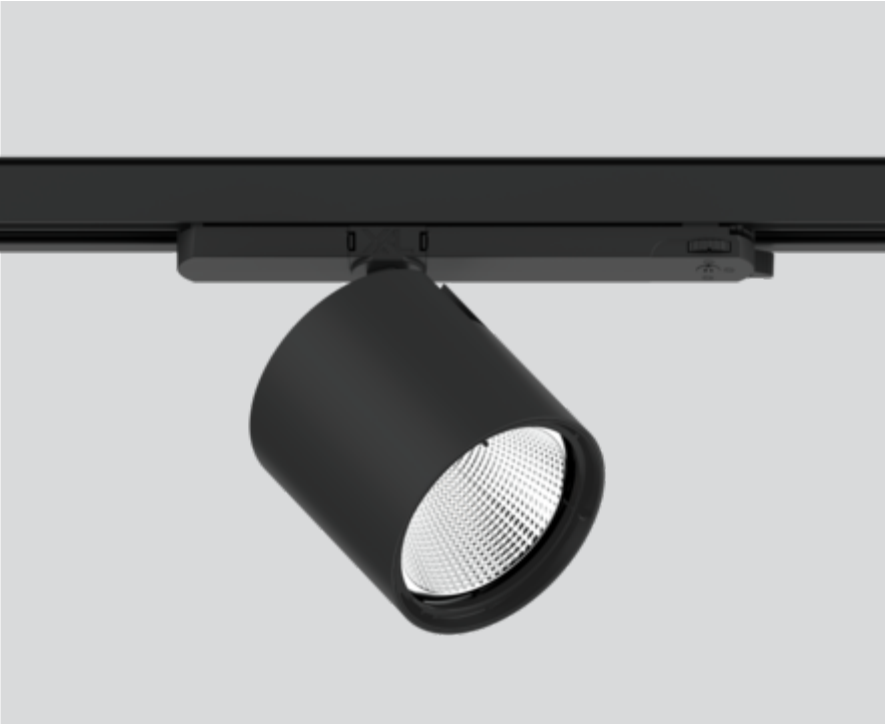
180-6530238W



Project / Type

Notes

Count / Date



General

Ceiling , Track

tilt max 90°

rotation 355°

black , RAL 9005 ¹

IP20

3180 lm

LED

3500 K

CRI ≥ 90

L85 / 50000 h

initial MacAdam ≤ 3 SDCM

R_g: 97 , R_f: 90 , R₍₁₋₁₅₎: 93

MR 0.73

MDER 0.66

Optical

wide flood

beam angle 66°

PstLM ≤ 1.0 ²

SVM ≤ 0.4 ²

Track light made of die-cast aluminium; surface black powder coated; 355° rotatable and 90° tiltable; integrated converter in the plastic adapter; passive cooling of the LEDs through improved heat sink geometry; with COB (Chip on Board) technology for maximum efficiency; no appearance of multiple shadows; light colour 3500 K; binning initial MacAdam ≤ 3 SDCM; CRI ≥ 90; min. 85% of luminous flux after 50000 operating hours; energy efficient LEDs with high CRI; including high quality aluminium reflector with spherical reflector; high gloss anodised; neutral colour reflection through absolute freedom from interference colour; for brilliant object staging; precise radiation characteristic with 66° beam; installed and exchanged without tools; optical attachments available as accessories; optical attachments can be combined; accessories are listed separately; degree of protection IP20; PC2; 220-240 V; incl. DALI-2 converter; adapter for toolless insertion or movement on a variety of 3-phase power tracks; light source replaceable by an authorized professional; control gear replaceable by an authorized professional;

Electrical

DALI-2

220-240 V

system 23.4 W

system 136 lm/W³

PC2

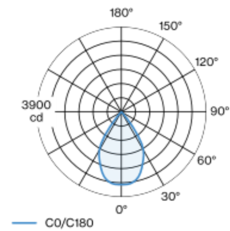
1 DALI Addr.

Physical

diameter 110 mm

height 110 mm

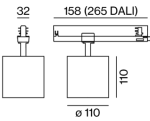
Light distribution



wide flood 66°

h (m)	E0° (lx)	ø (m)
1	3330	1.30
2	830	2.60
3	370	3.89
4	210	5.19
5	130	6.49

Product drawing



¹ RAL code ² Value of containing product at full load (undimmed)
³ FIXTURE: incl. consideration of optical losses & internal control unit losses SYSTEM: incl. consideration of optical losses, internal control unit losses & operating device efficiency.

Installation instructions



Lighting calculator

