

VARO 110 S

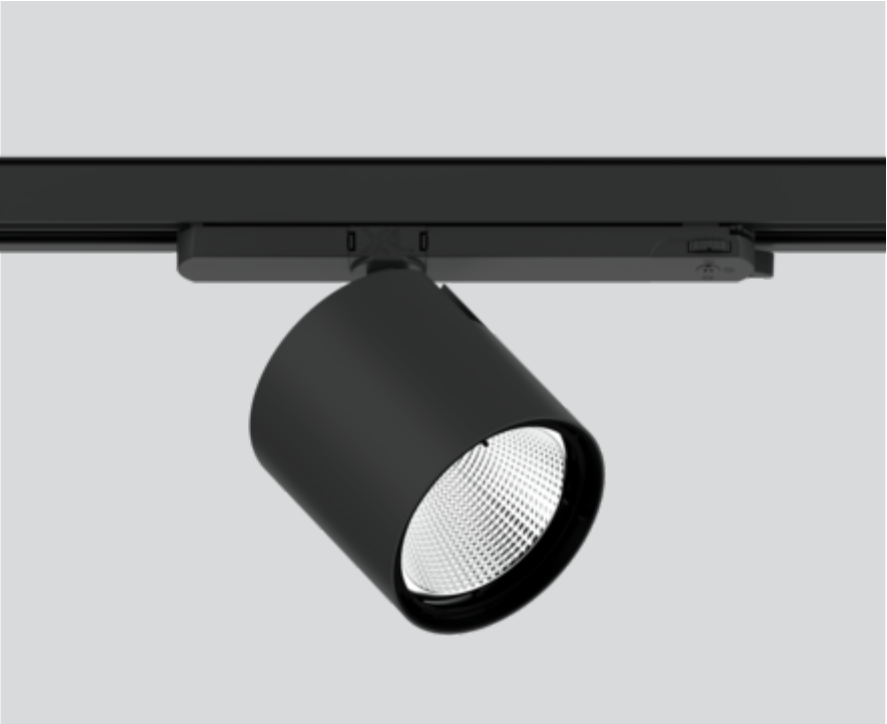
180-6531018S



Project / Type _____

Notes _____

Count / Date _____



General

Ceiling , Track _____

tilt max 90° _____

rotation 355° _____

black , RAL9005 ¹ _____

IP20 _____

4440 lm _____

LED

3000 K _____

CRI ≥ 90 _____

L85 / 50000 h _____

initial MacAdam ≤ 3 SDCM _____

R_g: 99 , R_f: 92 , R₍₁₋₁₅₎: 93 _____

MR 0.61 _____

MDER 0.55 _____

Optical

spot _____

beam angle 14° _____

Electrical

non DIM _____

36 W _____

PC2 220-240V _____

123 lm/W _____

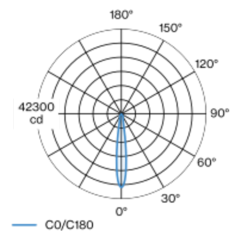
Physical

diameter 110 mm _____

height 110 mm _____

¹ RAL code

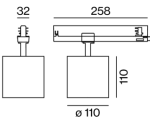
Light distribution



spot 14°

h (m)	EO° (lx)	ø (m)
1	36600	0.25
2	9100	0.50
3	4100	0.75
4	2300	1.00
5	1500	1.25

Product drawing



Installation instructions



Lighting calculator



[180-6531018S] The technical data represent rated values for an ambient temperature of 25°C. The data values for the luminous flux are initially subject to a tolerance of +/- 10%, those for the electrical connected load are initially subject to a tolerance of +/- 10%, and those for the colour temperature are initially subject to a tolerance of +/- 150 K. No liability is assumed for typographical or printing errors. The general terms and conditions of XAL GmbH apply.
© XAL GmbH · Auer-Welsbach-Gasse 36 · 8055 Graz · Austria · www.xal.com

03.07.2024