

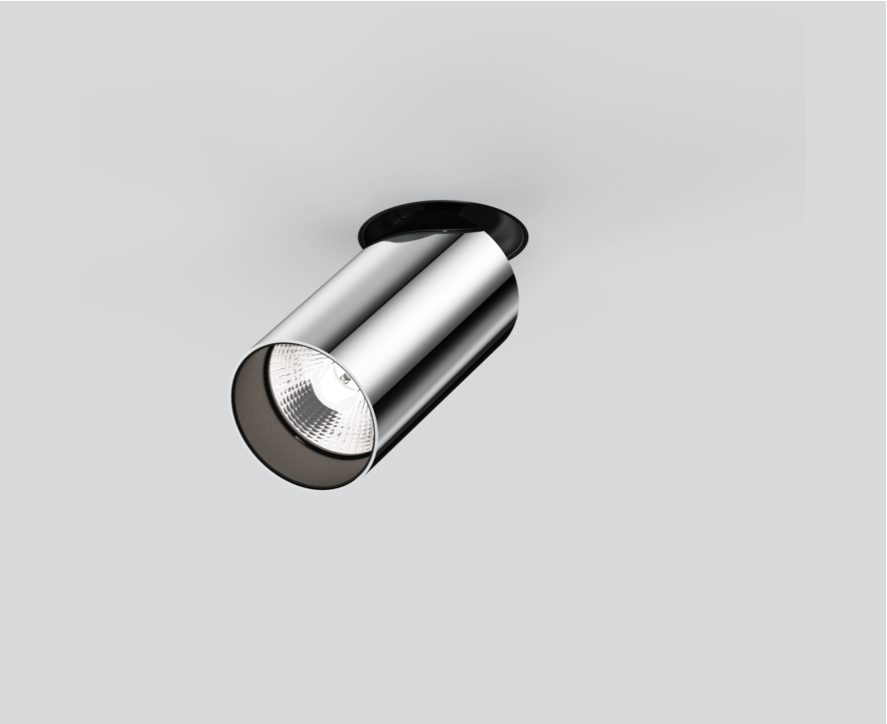
MOVE IN 45 flex round

trimless

063-8221514S 063-8812117 002-90720



Project / Type
Notes
Count / Date



220-240V
X-PERT
X-PERT

General
Ceiling , Semi-Recessed
tilt max 90°
rotation 360°
chrome
Mounting set traffic white
IP20
1080 lm

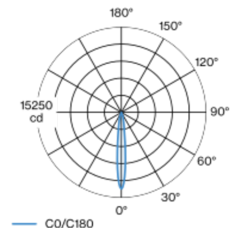
LED
3000 K
CRI ≥ 90
L80 / 50000 h
initial MacAdam ≤ 2 SDCM
R _g : 100 , R _f : 91 , R _{f(1-5)} : 88
MR 0.59
MDER 0.53

Optical
spot
beam angle 12°
P _{stLM} ≤ 1.0 ¹
SVM ≤ 0.4 ¹

Round spotlight element in aluminium; surface chrome; installation without tools in mounting set due to patented ball catch system; for trimless installation in plasterboard ceilings; suitable for ceiling thickness of 9-25 mm; special mounting tool for easy installation of the trimless housing available as an accessory; spotlight element height adjustable without tools: flush with the ceiling, or extended 25 mm or 35 mm; 360° rotatable and 90° tiltable; passive cooling of the LEDs through improved heat sink geometry; with COB (Chip on Board) technology for maximum efficiency; no appearance of multiple shadows; light colour 3000 K; binning initial MacAdam ≤ 2 SDCM; CRI ≥ 90; min. 80% of luminous flux after 50000 operating hours; energy efficient LEDs with high CRI; high quality, aluminium, vapour deposition coated reflector with faceted lens design; precise radiation characteristic with 12° beam; good glare control through recessed light point level; optical attachment available as accessory; accessories are listed separately; degree of protection IP20; PC2 220-240V; incl. DALI-2 converter; converter wired secondary side; light source replaceable by an authorized professional; control gear replaceable by an authorized professional;

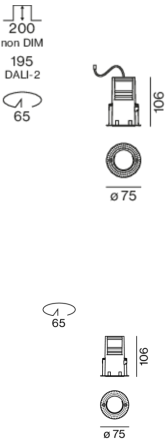
Electrical
DALI-2
14.5 W
inset 12.4 W
37 Vf
350 mA
PC2 220-240V
74 lm/W
1 DALI Addr.

Light distribution



spot 12°		
h (m)	E0° (lx)	ø (m)
1	13700	0.21
2	3400	0.42
3	1500	0.63
4	900	0.84
5	500	1.06

Product drawing



Physical
trimless
diameter 75 mm
height 106 mm
0.47 kg

Cutout
diameter 65 mm
min. ceiling thickness 9 mm
max. ceiling thickness 25 mm
recessed depth 195 mm

¹ Value of containing product at full load (undimmed)

Installation instructions

Lighting calculator