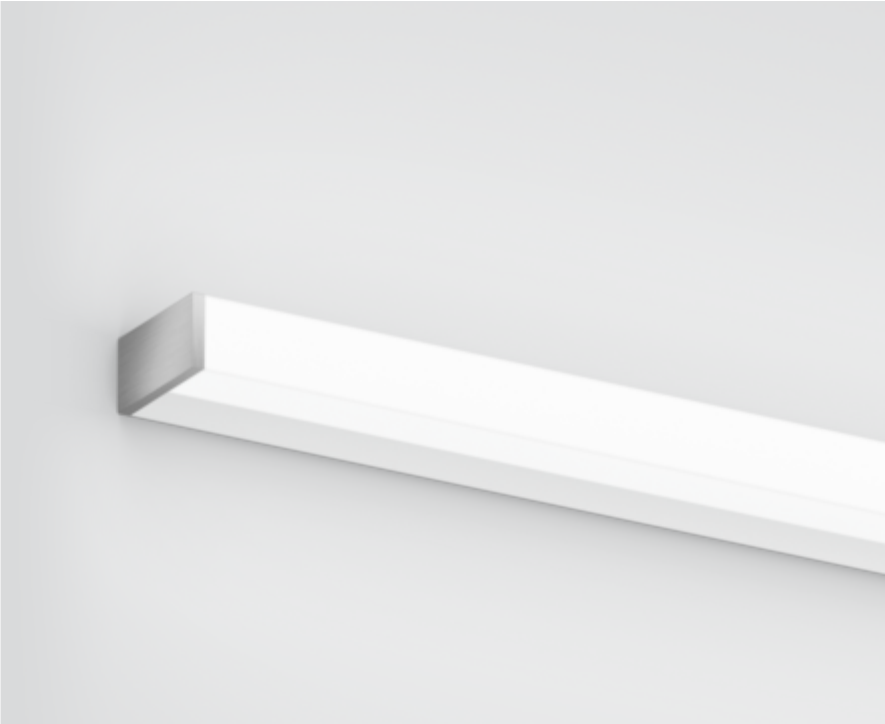




Project / Type

Notes

Count / Date



General

Wall , Surface

white , RAL 9010 <sup>1</sup>

End cap brushed aluminium

IP44

2680 lm

LED

3000 K

CRI ≥ 90

L80 / 50000 h

initial MacAdam ≤ 3 SDCM

R<sub>g</sub>: 99 , R<sub>r</sub>: 91 , R<sub>f(1-15)</sub>: 89

MR 0.61

MDER 0.55

Optical

High Performance Opal

opal (lambertsch)

P<sub>stLM</sub> ≤ 1.0 <sup>2</sup>

SVM ≤ 0.4 <sup>2</sup>

Electrical

DALI-2

220-240 V

system 26.3 W

system 102 lm/W<sup>3</sup>

PC1

1 DALI Addr.

Physical

length 1200 mm

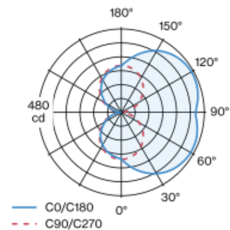
width 80 mm

height 40 mm

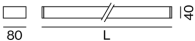
1.8 kg

Luminaire housing made of extruded aluminium profile; angular design; no visible screws; surface white powder coated; end cap brushed aluminium; suitable for wall mounting; luminaire profile can be pre-mounted; with three sided light beam; HPO (High Performance Opal) cover for uniform illumination; light colour 3000 K; binning initial MacAdam ≤ 3 SDCM; CRI ≥ 90; min. 80% of luminous flux after 50000 operating hours; energy efficient LEDs with high CRI; degree of protection IP44; PC1; 220-240 V; incl. DALI-2 converter; light source not replaceable; control gear replaceable by an authorized professional;

Light distribution



Product drawing



<sup>1</sup> RAL code <sup>2</sup> Value of containing product at full load (undimmed)  
<sup>3</sup> FIXTURE: incl. consideration of optical losses & internal control unit losses SYSTEM: incl. consideration of optical losses, internal control unit losses & operating device efficiency.

Installation instructions

