

# TARO 45 downlight

MOVE IT 10 square

030-6710438M



Project / Type

Notes

Count / Date



## General

Ceiling / Wall , Track

jet black , RAL 9005 <sup>1</sup>

IP20

926 lm

optical inset 94 lm/W<sup>2</sup>

## LED

2700 K

CRI ≥ 90

L80 / 50000 h

initial MacAdam ≤ 2 SDCM

R<sub>g</sub>: 99 , R<sub>r</sub>: 91 , R<sub>f(1-15)</sub>: 89

MR 0.53

MDER 0.48

## Optical

medium

beam angle 24°

PstLM ≤ 1.0 <sup>3</sup>

SVM ≤ 0.4 <sup>3</sup>

## Electrical

DALI-2

48 V

fixture 11.0 W

optical inset 9.9 W

PC3

1 DALI Addr.

## Physical

diameter 45 mm

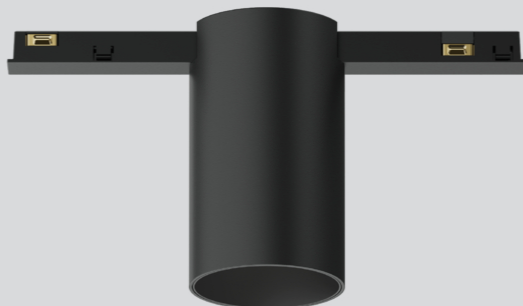
height 75 mm

<sup>1</sup> RAL code

<sup>2</sup> OPTICAL INSET: incl. consideration of optical losses

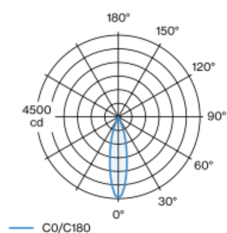
<sup>3</sup> Value of containing product at full load (undimmed)

## Installation instructions



Cylindrical spotlight in aluminium; surface jet black powder coated; light inset can be installed and moved without tools by means of clip mount; power supplied via MOVE IT system track profile; hot plug protection; passive cooling of the LEDs through improved heat sink geometry; light colour 2700 K; binning initial MacAdam ≤ 2 SDCM; CRI ≥ 90; min. 80% of luminous flux after 50000 operating hours; energy efficient LEDs with high CRI; good glare control through recessed light point level; precise radiation characteristic with 24° beam; no multiple shadows; optical attachment available as accessory; accessories are listed separately; degree of protection IP20; PC3; 48 V; DALI-2 control; flicker-free visual comfort through analogue current control (minimum value 1%); light source replaceable by an authorized professional;

## Light distribution



medium 24°

h (m)	E0° (lx)	ø (m)
1	4460	0.43
2	1110	0.86
3	500	1.30
4	280	1.73
5	180	2.16

## Product drawing

