

# POWER SUPPLY

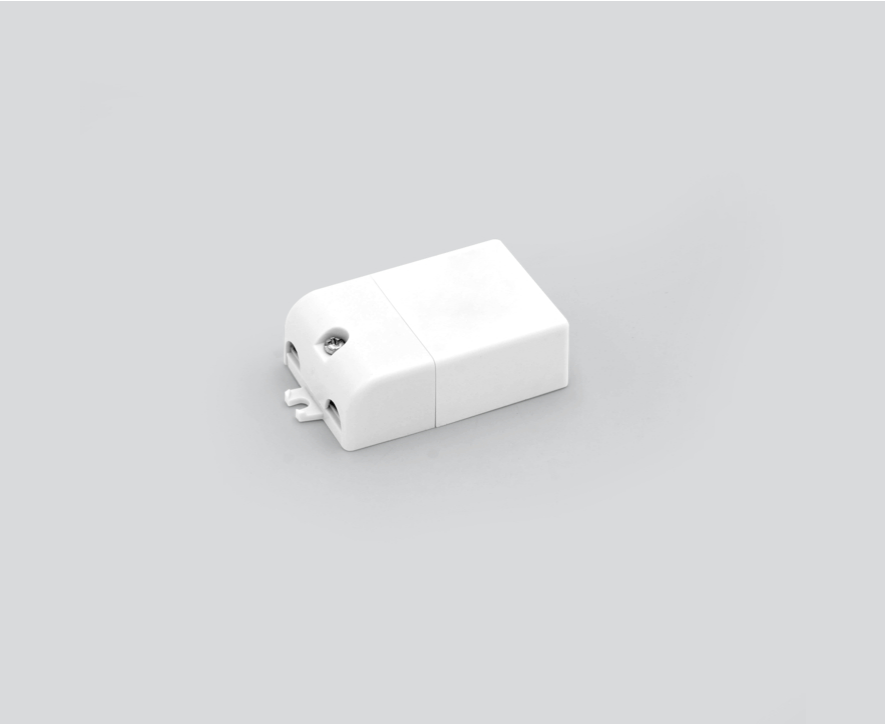
002-90742



Project / Type

Notes

Count / Date



General

10 W

Electrical

250 mA

PC2

10 W

non DIM

min 198 V

max 264 V

$\eta$  80 %

Constant Current

min 50 Hz

max 60 Hz

constant current 250 mA

Physical

length 65 mm

width 39 mm

height 20 mm



# POWER SUPPLY

002-90742



Project / Type

Notes

Count / Date

## Circuit Breaker Types

Automatic Circuit Breaker Type	Number of Converters
B10	57
B13	75
B16	92
B20	115
C10	57
C13	75
C16	92
C20	115

