

CONVERTER

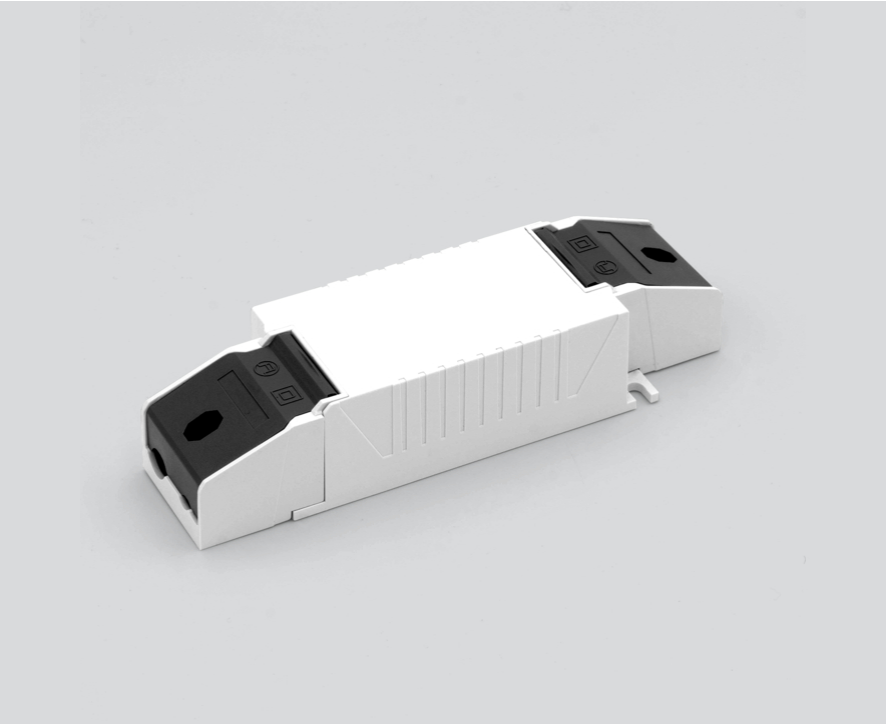
002-90762



Project / Type

Notes

Count / Date



Electrical

300 mA

PC2

28 W

Dim DALI, Push Dim, Dim Dali 2

176 V

264 V

η 87 %

Constant Current

50 Hz

60 Hz

Physical

length 143 mm

width 43 mm

height 30 mm



CONVERTER

002-90762



Project / Type

Notes

Count / Date

Circuit Breaker Types

Automatic Circuit Breaker Type	Number of Converters
B10	18
B16	30
C10	23
C16	36

