

# THROUGH WIRING CONNECTION BOX

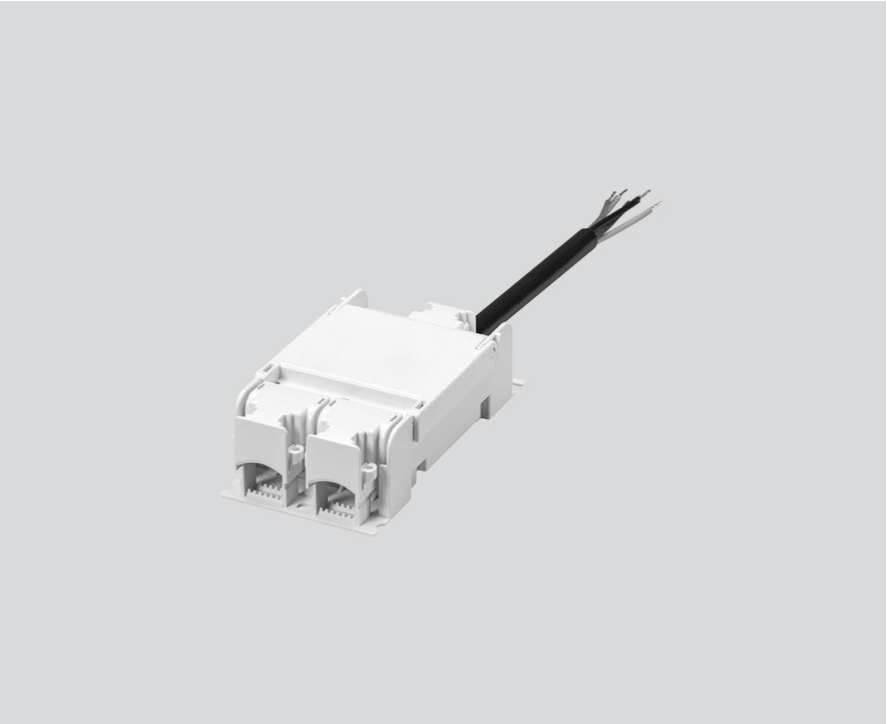
005-2551110



Project / Type \_\_\_\_\_

Notes \_\_\_\_\_

Count / Date \_\_\_\_\_



**General**

DALI cable  $\varnothing$  4 – 12 mm \_\_\_\_\_

**Physical**

length 105 mm \_\_\_\_\_

width 58 mm \_\_\_\_\_

height 30 mm \_\_\_\_\_

0.07 kg \_\_\_\_\_

