

# SASSO 100 square wallwasher

trim

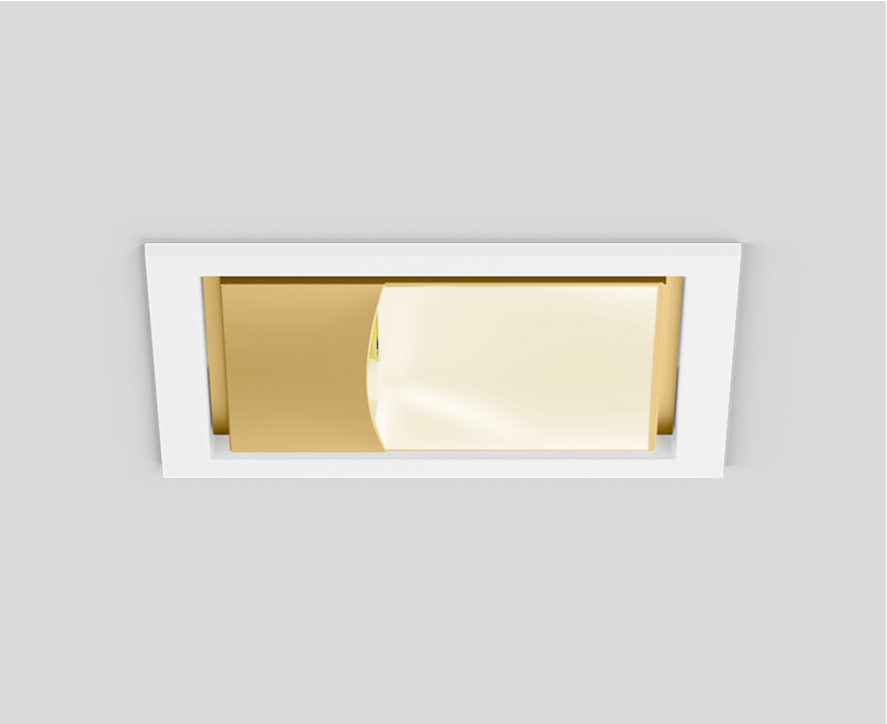
048-2750419A 048-2797317 002-90777



Project / Type

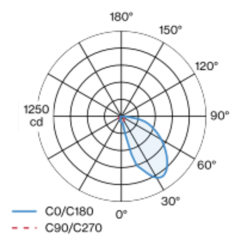
Notes

Count / Date

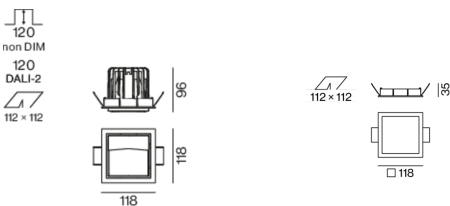


Recessed square spotlight in die-cast aluminium; 1 lamp; surface gold; installation without tools in mounting set due to patented ball catch system; square installation housing; with trim traffic white; suitable for ceiling thickness of 2-25 mm; passive cooling of the LEDs through improved heat sink geometry; no multiple shadows; light colour 2700 K; binning initial MacAdam  $\leq 3$  SDCM; CRI  $\geq 90$ ; min. 80% of luminous flux after 50000 operating hours; energy efficient LEDs with high CRI; with specially computed, asymmetrical reflector for homogeneous lighting intensity; high quality reflector with micro-faceted, aluminum-vaporised surface; PC2 220-240V; incl. converter, non dimmable; through wiring connection box, 3-pole or 5-pole, available as an accessory; accessories are listed separately; light source replaceable by an authorized professional; control gear replaceable by an authorized professional;

## Light distribution



## Product drawing



## General

Ceiling , Recessed  
gold , RAL260-M <sup>1</sup>  
Mounting set traffic white  
IP20  
1490 lm

## LED

2700 K  
CRI  $\geq 90$   
L80 / 50000 h  
initial MacAdam  $\leq 3$  SDCM  
R<sub>g</sub>: 97 , R<sub>f</sub>: 91 , R<sub>f(1-15)</sub>: 90  
MR 0.53  
MDER 0.48

## Optical

wallwasher  
PstLM  $\leq 1.0$  <sup>2</sup>  
SVM  $\leq 0.4$  <sup>2</sup>

## Electrical

non DIM  
20.3 W  
inset 17.3 W  
36 Vf  
250 mA  
PC2 220-240V  
73 lm/W

## Physical

trim  
length 118 mm  
width 118 mm  
height 96 mm  
0.71 kg

## Cutout

length 112 mm  
width 112 mm  
min. ceiling thickness 2 mm  
max. ceiling thickness 25 mm  
recessed depth 120 mm

<sup>1</sup> RAL code <sup>2</sup> Value of containing product at full load (undimmed)

## Installation instructions



## Lighting calculator

