

SASSO 100 square wallwasher/floor

trim 2 lamps

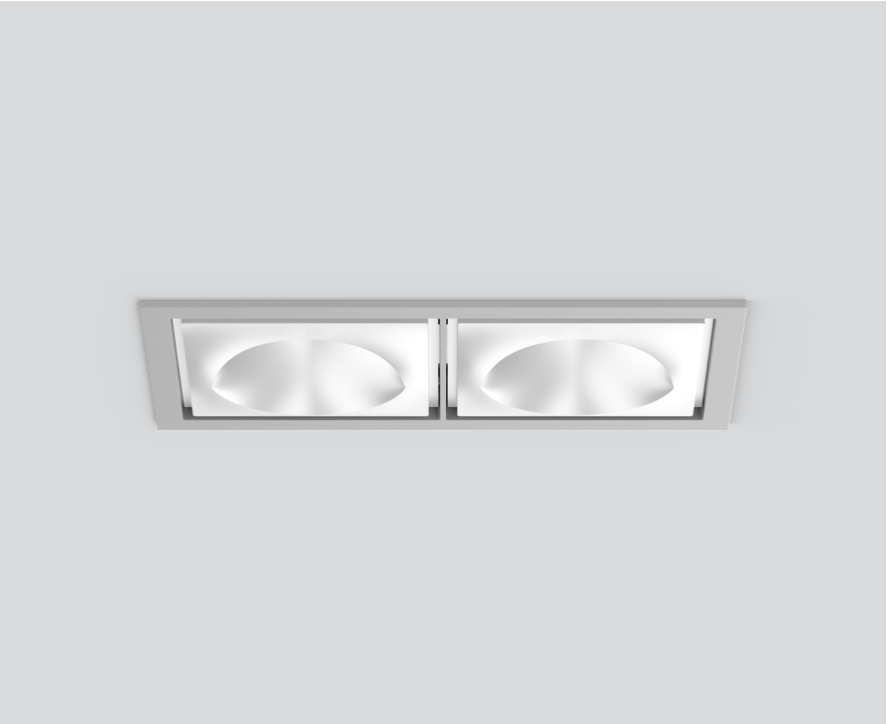
048-2750517W 048-279931G 002-90777



Project / Type

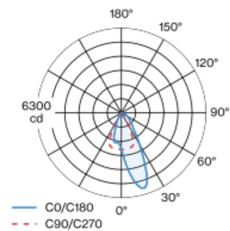
Notes

Count / Date



Recessed square spotlight in die-cast aluminium; 2 lamps; surface white; installation without tools in mounting set due to patented ball catch system; rectangular installation housing; with trim white aluminium; suitable for ceiling thickness of 2-25 mm; passive cooling of the LEDs through improved heat sink geometry; with COB (Chip on Board) technology for maximum efficiency; no appearance of multiple shadows; light colour 3000 K; binning initial MacAdam ≤ 2 SDCM; CRI ≥ 90 ; min. 80% of luminous flux after 50000 operating hours; energy efficient LEDs with high CRI; with specially computed, asymmetrical reflector for homogeneous lighting intensity; high quality reflector with micro-faceted, aluminum-vaporised surface; PC2 220-240V; incl. converter, non dimmable; through wiring connection box, 3-pole or 5-pole, available as an accessory; accessories are listed separately; light source replaceable by an authorized professional; control gear replaceable by an authorized professional;

Light distribution



Product drawing



General

Ceiling , Recessed
white , RAL9016 ¹
Mounting set white aluminium
IP20
3980 lm

LED

3000 K
CRI ≥ 90
L80 / 50000 h
initial MacAdam ≤ 2 SDCM
R_g: 100 , R_f: 91 , R_{f(1-15)}: 88
MR 0.59
MDER 0.53

Optical

wallwasher floor
PstLM ≤ 1.0 ²
SVM ≤ 0.4 ²

Electrical

non DIM
system 38 W
inset 16.3 W
36 Vf
500 mA
total insets 33 W
PC2 220-240V
system 105 lm/W³
inset 122 lm/W⁴

Physical

trim
length 218 mm
width 118 mm
height 96 mm
0.77 kg

Cutout

length 210 mm
width 112 mm
min. ceiling thickness 2 mm
max. ceiling thickness 25 mm
recessed depth 100 mm

¹ RAL code ² Value of containing product at full load (undimmed)
³ incl. optical losses and the efficiency of the operating device (converter)
⁴ incl. optical losses

Installation instructions



Lighting calculator

