

# SASSO 100 square wallwasher

trim

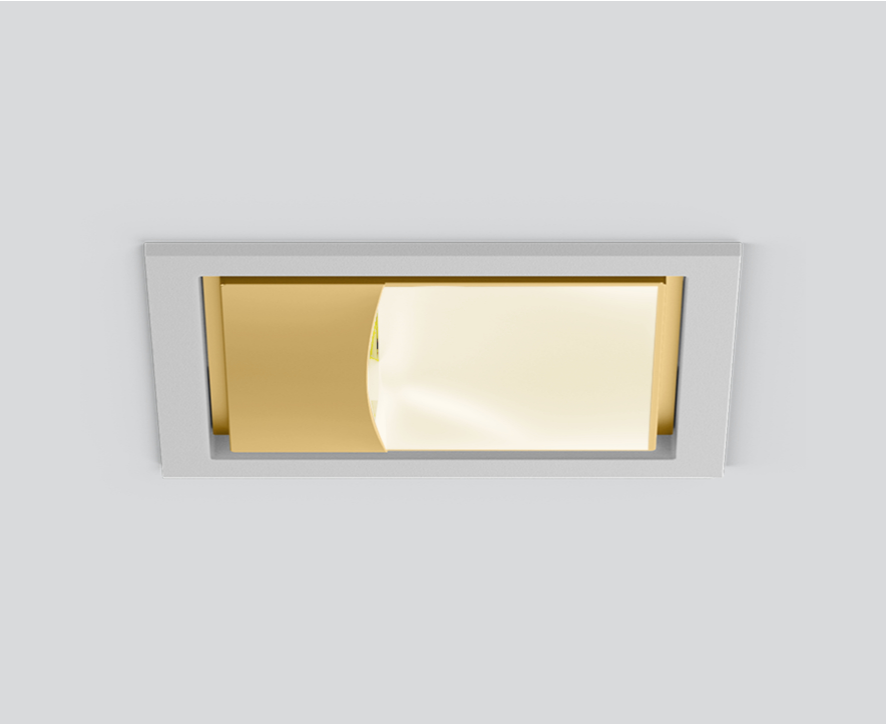
048-2750619A 048-279731G 002-90779



Project / Type

Notes

Count / Date



### General

Ceiling , Recessed

gold , RAL260-M <sup>1</sup>

Mounting set silver-grey

IP20

1610 lm

### LED

4000 K

CRI ≥ 90

L80 / 50000 h

initial MacAdam ≤ 3 SDCM

R<sub>g</sub>: 94 , R<sub>r</sub>: 87 , R<sub>t(1-15)</sub>: 86

MR 0.8

MDER 0.72

### Optical

wallwasher

PstLM ≤ 1.0 <sup>2</sup>

SVM ≤ 0.4 <sup>2</sup>

### Electrical

DALI-2

20.3 W

inset 17.3 W

36 Vf

250 mA

PC2 220-240V

79 lm/W

### Physical

trim

length 118 mm

width 118 mm

height 96 mm

0.74 kg

### Cutout

length 112 mm

width 112 mm

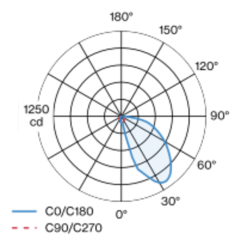
min. ceiling thickness 2 mm

max. ceiling thickness 25 mm

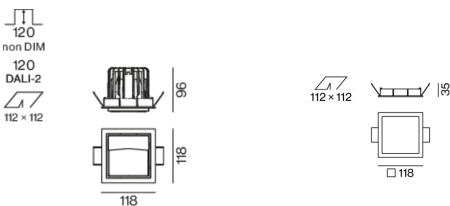
recessed depth 120 mm

Recessed square spotlight in die-cast aluminium; 1 lamp; surface gold; installation without tools in mounting set due to patented ball catch system; square installation housing; with trim silver-grey; suitable for ceiling thickness of 2-25 mm; passive cooling of the LEDs through improved heat sink geometry; no multiple shadows; light colour 4000 K; binning initial MacAdam ≤ 3 SDCM; CRI ≥ 90; min. 80% of luminous flux after 50000 operating hours; energy efficient LEDs with high CRI; with specially computed, asymmetrical reflector for homogeneous lighting intensity; high quality reflector with micro-faceted, aluminum-vaporised surface; PC2 220-240V; incl. DALI-2 converter; through wiring connection box, 3-pole or 5-pole, available as an accessory; accessories are listed separately; light source replaceable by an authorized professional; control gear replaceable by an authorized professional;

### Light distribution



### Product drawing



<sup>1</sup> RAL code <sup>2</sup> Value of containing product at full load (undimmed)

### Installation instructions



### Lighting calculator

