

MOUNTING HOUSING

round

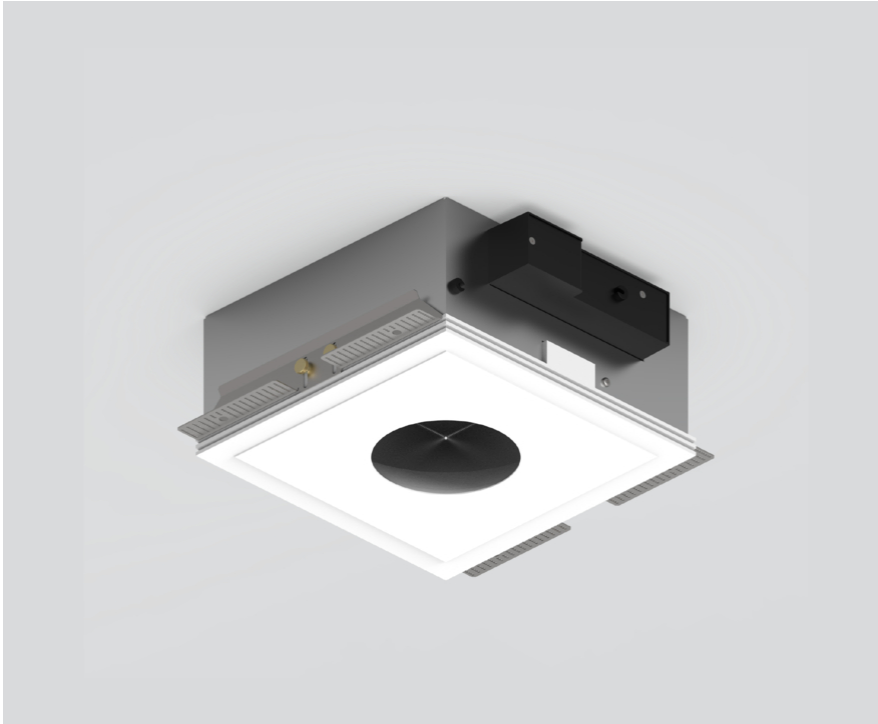
049-8803037



Project / Type

Notes

Count / Date



General

Ceiling , Recessed

traffic white , RAL 9016 ¹

IP20

Electrical

DALI-2

220-240 V

PC1

1 DALI Addr.

Physical

length 260 mm

width 260 mm

height 120 mm

Cutout

length 270 mm

width 270 mm

min. ceiling thickness 8 mm

max. ceiling thickness 25 mm

recessed depth 140 mm

Recessed housing made of pressed steel sheet for flush installation in plasterboard ceilings, underside of aluminium-reinforced plaster (paintable); with round cut-out; no break-out of edges; for trimless installation in plasterboard ceilings; suitable for ceiling thickness of 8-25 mm; 3 non-reversible plug and play connector sockets for power supply to the spotlights; spotlight can be installed and moved without tools by means of magnetic holders; hot plug protection; surface traffic white powder coated; degree of protection IP20; PC1; incl. DALI-2 converter; all spotlights together DALI dimmable; control gear replaceable by an authorized professional;

¹ RAL code

Installation instructions



Product drawing

