

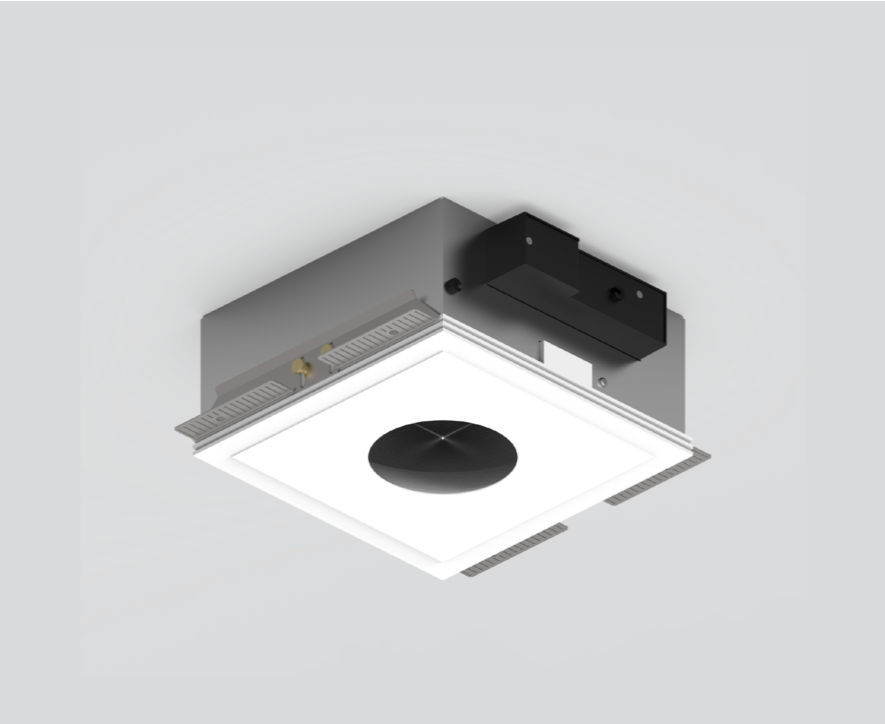
# MOUNTING HOUSING

## with glowing round

049-8823537

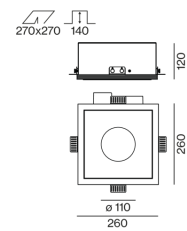


Project / Type	
Notes	
Count / Date	



Recessed housing made of pressed steel sheet for flush installation in plasterboard ceilings, underside of aluminium-reinforced plaster (paintable); with round cut-out; no break-out of edges; for trimless installation in plasterboard ceilings; suitable for ceiling thickness of 8-25 mm; 3 non-reversible plug and play connector sockets for power supply to the spotlights; spotlight can be installed and moved without tools by means of magnetic holders; hot plug protection; indirect light component in housing; light colour 3000 K; binning initial MacAdam  $\leq 3$  SDCM; CRI  $\geq 90$ ; min. 80% of luminous flux after 50000 operating hours; energy efficient LEDs with high CRI; indirect component in the channel continuously adjustable dimming via DALI; surface traffic white powder coated; degree of protection IP20; PC1 220-240V; incl. DALI-2 converter; all spotlights together DALI dimmable; light source replaceable by an authorized professional; control gear replaceable by an authorized professional;

### Product drawing



### General

Ceiling , Recessed
traffic white , RAL 9016 <sup>1</sup>
IP20

### LED

3000 K
CRI $\geq 90$
initial MacAdam $\leq 3$ SDCM
R <sub>g</sub> : 101 , R <sub>r</sub> : 91 , R <sub>(1-15)</sub> : 89
MR 0.56
MDER 0.51

### Electrical

DALI-2
PC1 220-240V
1 DALI Addr.

### Physical

length 260 mm
width 260 mm
height 120 mm

### Cutout

length 270 mm
width 270 mm
min. ceiling thickness 8 mm
max. ceiling thickness 25 mm
recessed depth 140 mm

<sup>1</sup> RAL code

### Installation instructions

