

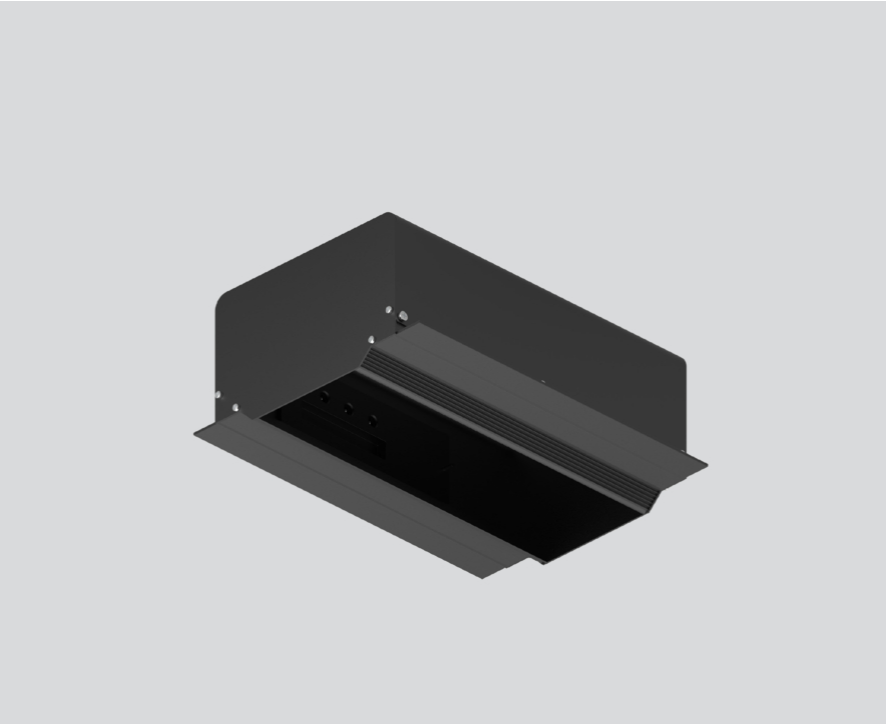
MOUNTING HOUSING

300 trimless linear

049-8843038

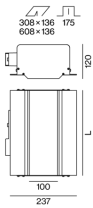


Project / Type	
Notes	
Count / Date	



Installation housing in pressed steel sheet with rectangular cut-out; for trimless installation in plasterboard ceilings; special edge design with perforations for better adhesion of filler; suitable for ceiling thickness of 12.5 mm; 3 non-reversible plug and play connector sockets for power supply to the spotlights; spotlight can be installed and moved without tools by means of magnetic holders; hot plug protection; surface jet black powder coated; degree of protection IP20; PC1; incl. DALI-2 converter; all spotlights together DALI dimmable; control gear replaceable by an authorized professional;

Product drawing



General

Ceiling , Recessed	
jet black , RAL 9005 ¹	
IP20	

Electrical

DALI-2	
220-240 V	
PC1	
1 DALI Addr.	
PC2	
25 W	
Dim DALI, Push Dim, Dim DSI, Dim Dali 2	
min 198 V	
max 264 V	
Constant Current	
min 50 Hz	
max 60 Hz	

Physical

length 308 mm	
width 252 mm	
height 120 mm	

Cutout

length 308 mm	
width 136 mm	
min. ceiling thickness 12.5 mm	
max. ceiling thickness 12.5 mm	
recessed depth 175 mm	

¹ RAL code

Installation instructions



[‘049-8843038’] The technical data represent rated values for an ambient temperature of 25°C. The data values for the luminous flux are initially subject to a tolerance of +/- 10%, those for the electrical connected load are initially subject to a tolerance of +/- 10%, and those for the colour temperature are initially subject to a tolerance of +/- 150 K. No liability is assumed for typographical or printing errors. The general terms and conditions of XAL GmbH apply.
© XAL GmbH · Auer-Welsbach-Gasse 36 · 8055 Graz · Austria · www.xal.com