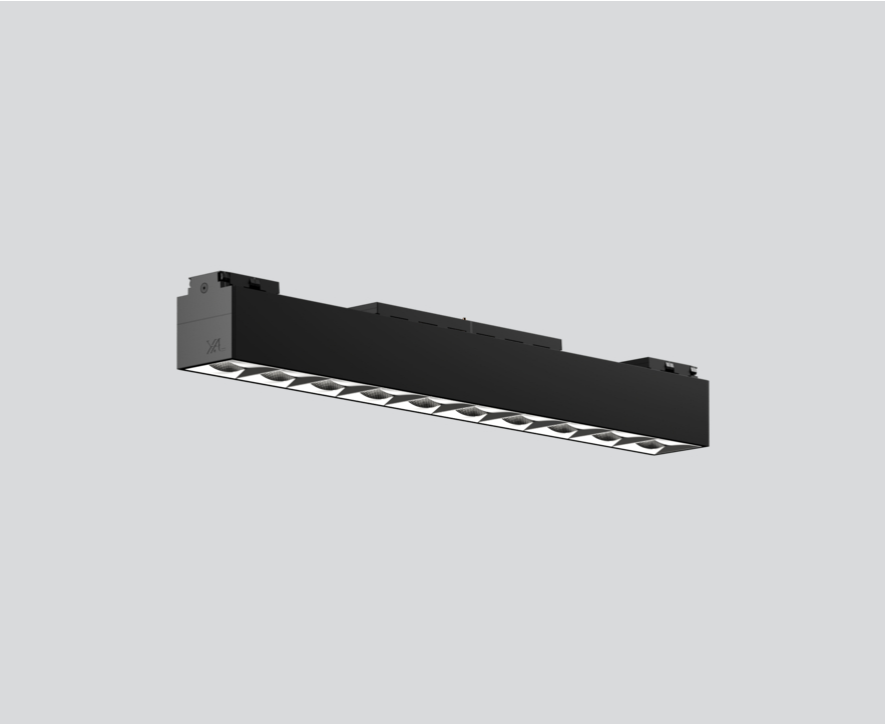




Project / Type

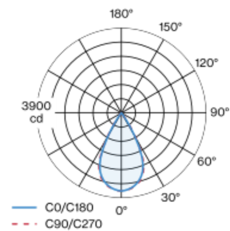
Notes

Count / Date



Linear light inset made of aluminium; surface anodised black; light inset can be installed and moved without tools by means of magnetic holders+locking; flush with profile system; power supplied via MOVE IT system track profile; hot plug protection; equipped with ten specially computed OFFICE light elements; high quality reflector with micro-faceted, aluminum-vaporised surface; Reflector chrome; precise radiation characteristic with symmetrical light distribution; UGR ≤ 16 ; VDU compatible workplace luminaire according to DIN EN 12464-1; luminance above $65^\circ \leq 1500 \text{ cd/m}^2$; passive cooling of the LEDs through improved heat sink geometry; light colour: tunable white diodes (2700-6500 K); binning initial MacAdam $\leq 3 \text{ SDCM}$; CRI ≥ 80 ; min. 85% of luminous flux after 50000 operating hours; energy-efficient high power LEDs with very good colour rendering; degree of protection IP20; PC3 48V; DALI single control; flicker-free visual comfort through analogue current control (minimum value 1%); light source not replaceable;

Light distribution



General

Ceiling , Track

black , RAL9005 ¹

Reflector chrome

IP20

2790 lm

LED

tunable white

2700 K - 6500 K

CRI ≥ 80

L85 / 50000 h

initial MacAdam $\leq 3 \text{ SDCM}$

MR 0.49

MDER 0.44

Optical

symmetric

beam angle 55°

UGR < 16 , $\geq 65^\circ < 1500 \text{ cd/m}^2$

PstLM ≤ 1.0 ²

SVM ≤ 0.4 ²

Electrical

DALI-2 DT8

system 22.2 W

PC3 48V

system 126 lm/W³

1 DALI Addr.

Physical

length 381 mm

width 43 mm

height 48 mm

0.5 kg

¹ RAL code ² Value of containing product at full load (undimmed)
³ incl. optical losses and the efficiency of the operating device (converter)

Installation instructions



Lighting calculator

