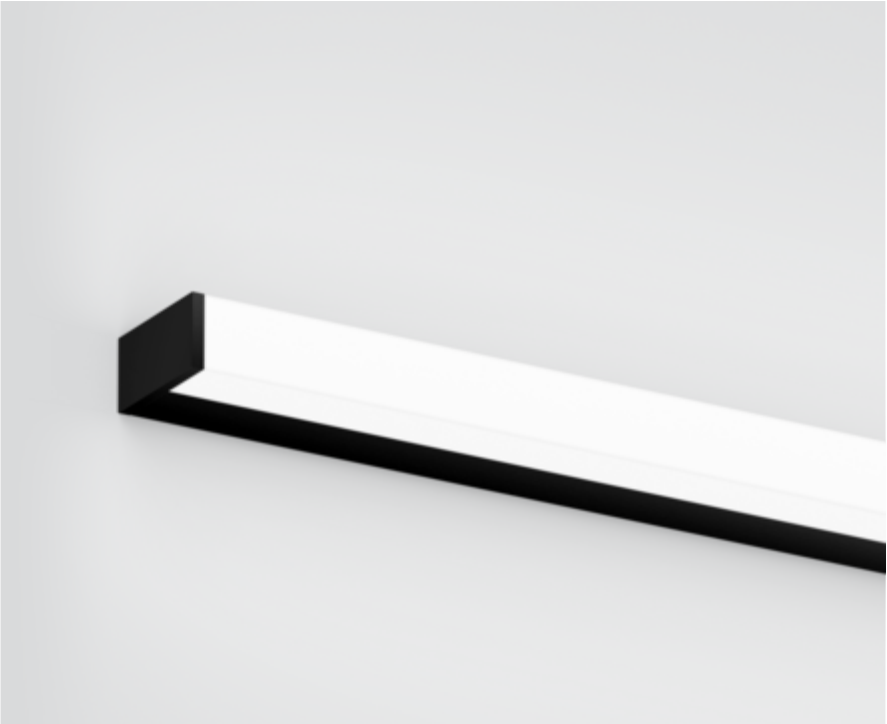




Project / Type

Notes

Count / Date



RG0
IEC 62471

220-240V

IP44

General

Wall , Surface

black , RAL9005 ¹

End cap black

IP44

2950 lm

LED

4000 K

CRI ≥ 90

L80 / 50000 h

photobio. safety RG 0 - no Risk

initial MacAdam ≤ 3 SDCM

R_g: 98 , R_f: 90 , R₍₁₋₁₅₎: 88

MR 0.76

MDER 0.69

Optical

High Performance Opal

opal (lambertsch)

PstLM ≤ 1.0 ²

SVM ≤ 0.4 ²

Electrical

DALI-2

system 26.3 W

PC1 220-240V

system 112 lm/W³

1 DALI Addr.

Physical

length 1200 mm

width 80 mm

height 40 mm

1.8 kg

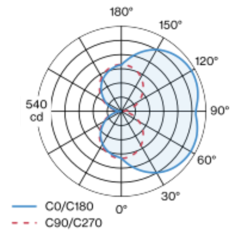
¹ RAL code ² Value of containing product at full load (undimmed)
³ incl. optical losses and the efficiency of the operating device (converter)

Installation instructions



Luminaire housing made of extruded aluminium profile; angular design; no visible screws; surface black powder coated; end cap black powder coated; suitable for wall mounting; luminaire profile can be pre-mounted; with three sided light beam; HPO (High Performance Opal) cover for uniform illumination; light colour 4000 K; binning initial MacAdam ≤ 3 SDCM; CRI ≥ 90; min. 80% of luminous flux after 50000 operating hours; energy efficient LEDs with high CRI; degree of protection IP44; PC1 220-240V; photobiological safety according to IEC 62471 risk group RG 0 - no Risk; incl. DALI-2 converter; light source not replaceable; control gear replaceable by an authorized professional;

Light distribution



Product drawing

