

# UNICO L3basic

ceiling

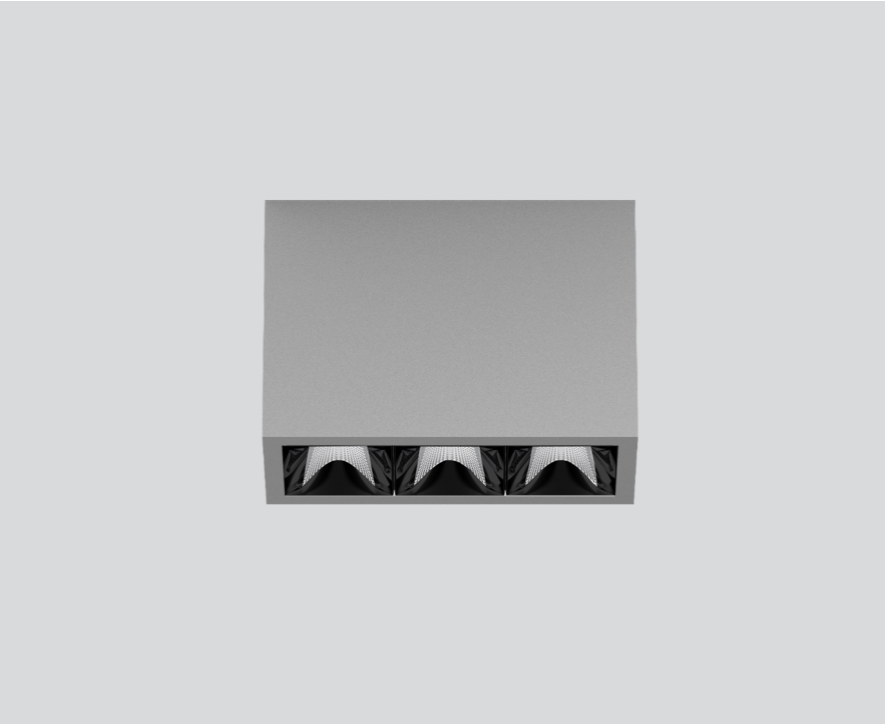
090-1L343DGB01



Project / Type \_\_\_\_\_

Notes \_\_\_\_\_

Count / Date \_\_\_\_\_



### General

Ceiling , Surface \_\_\_\_\_

grey , RAL 9006 <sup>1</sup> \_\_\_\_\_

Reflector black \_\_\_\_\_

IP20 \_\_\_\_\_

1540 lm \_\_\_\_\_

### LED

2700 K \_\_\_\_\_

CRI ≥ 90 \_\_\_\_\_

L90 / 50000 h \_\_\_\_\_

initial MacAdam ≤ 3 SDCM \_\_\_\_\_

R<sub>g</sub>: 101 , R<sub>f</sub>: 91 , R<sub>t(1-15)</sub>: 89 \_\_\_\_\_

MR 0.56 \_\_\_\_\_

MDER 0.51 \_\_\_\_\_

### Optical

wide flood round \_\_\_\_\_

beam angle 72° \_\_\_\_\_

≥65° <3000 cd/m<sup>2</sup> \_\_\_\_\_

PstLM ≤ 1.0 <sup>2</sup> \_\_\_\_\_

SVM ≤ 0.4 <sup>2</sup> \_\_\_\_\_

### Electrical

DALI-2 \_\_\_\_\_

220-240 V \_\_\_\_\_

system 17.9 W \_\_\_\_\_

system 86 lm/W<sup>3</sup> \_\_\_\_\_

PC1 \_\_\_\_\_

### Physical

length 126 mm \_\_\_\_\_

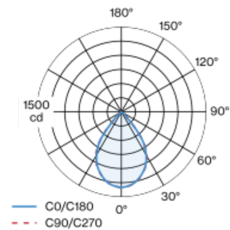
width 51 mm \_\_\_\_\_

height 90 mm \_\_\_\_\_

0.45 kg \_\_\_\_\_

<sup>1</sup> RAL code <sup>2</sup> Value of containing product at full load (undimmed)  
<sup>3</sup> incl. consideration of optical losses, internal control unit losses  
& operating device efficiency

### Light distribution



### Product drawing



### Installation instructions



### Lighting calculator

