

# UNICO L6 basic

ceiling

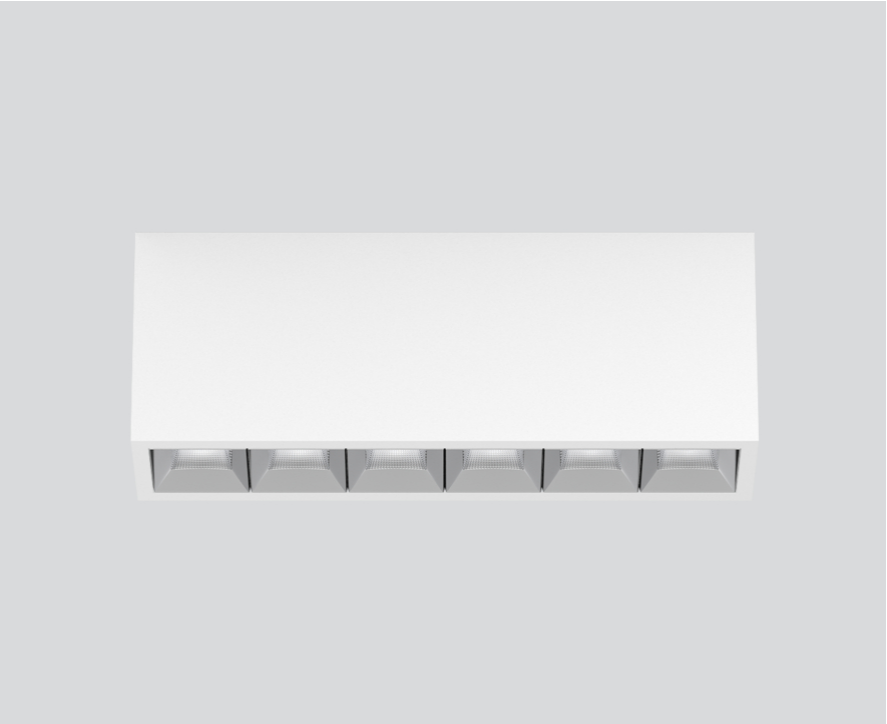
090-1L651GW001



Project / Type \_\_\_\_\_

Notes \_\_\_\_\_

Count / Date \_\_\_\_\_



## General

Ceiling , Surface \_\_\_\_\_

white , RAL 9016 <sup>1</sup> \_\_\_\_\_

Reflector chrome \_\_\_\_\_

IP20 \_\_\_\_\_

2790 lm \_\_\_\_\_

## LED

3000 K \_\_\_\_\_

CRI ≥ 90 \_\_\_\_\_

L90 / 50000 h \_\_\_\_\_

initial MacAdam ≤ 3 SDCM \_\_\_\_\_

R<sub>g</sub>: 100 , R<sub>f</sub>: 92 , R<sub>f(1-15)</sub>: 91 \_\_\_\_\_

MR 0.64 \_\_\_\_\_

MDER 0.58 \_\_\_\_\_

## Optical

wide flood square \_\_\_\_\_

beam angle 71° \_\_\_\_\_

≥65° <3000 cd/m<sup>2</sup> \_\_\_\_\_

PstLM ≤ 1.0 <sup>2</sup> \_\_\_\_\_

SVM ≤ 0.4 <sup>2</sup> \_\_\_\_\_

Rectangular surface mounted multi-downlight made of aluminium; luminaire housing can be attached to mounting plate without tools by interlock; converter integrated into luminaire housing; surface white powder coated; equipped with six wide flood square light elements; symmetrical light distribution with precise radiation characteristic, beam angle 71°; high quality reflector with micro-faceted, aluminum-vaporised surface; Reflector chrome; passive cooling of the LEDs through improved heat sink geometry; light colour 3000 K; binning initial MacAdam ≤ 3 SDCM; CRI ≥ 90; min. 90% of luminous flux after 50000 operating hours; energy-efficient high power LEDs with very good colour rendering; degree of protection IP20; PC1; 220-240 V; incl. converter, non dimmable; light source not replaceable; control gear replaceable by an authorized professional; clank-free;

## Electrical

non DIM \_\_\_\_\_

220-240 V \_\_\_\_\_

system 27.1 W \_\_\_\_\_

system 103 lm/W<sup>3</sup> \_\_\_\_\_

PC1 \_\_\_\_\_

## Physical

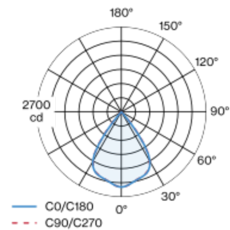
length 239 mm \_\_\_\_\_

width 51 mm \_\_\_\_\_

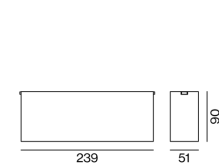
height 90 mm \_\_\_\_\_

0.7 kg \_\_\_\_\_

## Light distribution



## Product drawing



<sup>1</sup> RAL code <sup>2</sup> Value of containing product at full load (undimmed)  
<sup>3</sup> FIXTURE: incl. consideration of optical losses & internal control unit losses SYSTEM: incl. consideration of optical losses, internal control unit losses & operating device efficiency.

## Installation instructions



## Lighting calculator

