

# L4

MOVE IT 45

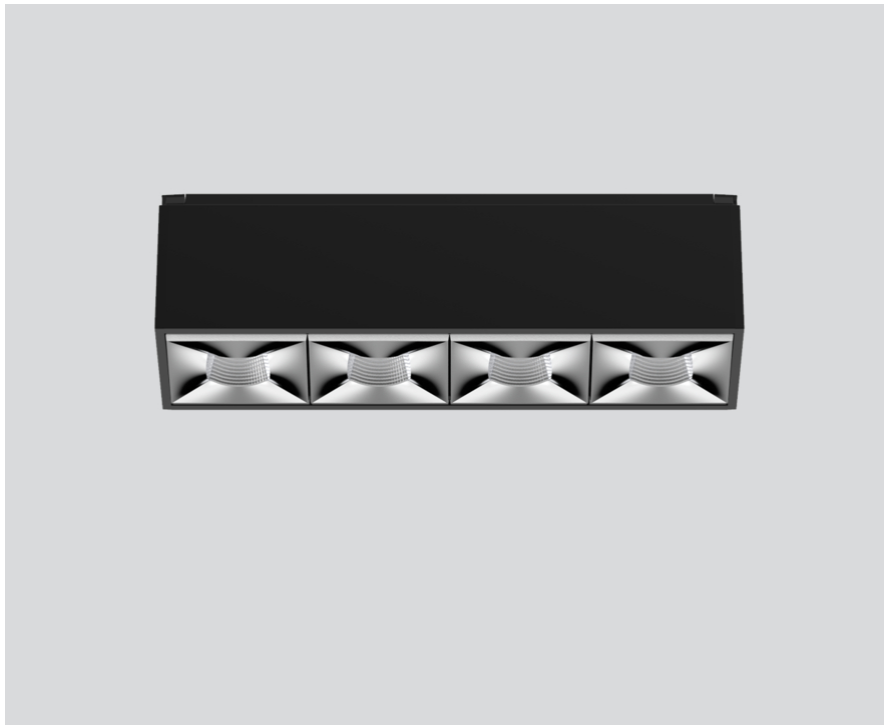
090-9L463EB001



Project / Type

Notes

Count / Date



## General

Ceiling , Track

black , RAL9005 <sup>1</sup>

Reflector chrome

IP20

1230 lm

## LED

4000 K

CRI  $\geq$  90

L80 / 50000 h

initial MacAdam  $\leq$  3 SDCM

R<sub>g</sub>: 102 , R<sub>f</sub>: 93 , R<sub>f(1-5)</sub>: 92

MR 0.81

MDER 0.74

## Optical

medium square

beam angle 33°

UGR < 10 ,  $\geq 65^\circ$  <1500 cd/m<sup>2</sup>

PstLM  $\leq$  1.0 <sup>2</sup>

SVM  $\leq$  0.4 <sup>2</sup>

## Electrical

DALI-2

system 13.6 W

PC3 48V

system 90 lm/W<sup>3</sup>

1 DALI Addr.

## Physical

length 156 mm

width 43 mm

height 48 mm

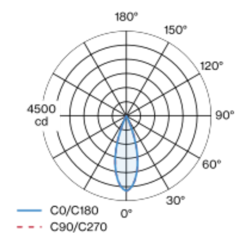
0.4 kg

<sup>1</sup> RAL code <sup>2</sup> Value of containing product at full load (undimmed)

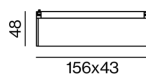
<sup>3</sup> incl. optical losses and the efficiency of the operating device (converter)

Linear light inset made of aluminium; surface anodised black; light inset can be installed and moved without tools by means of magnetic holders+locking; flush with profile system; power supplied via MOVE IT system track profile; hot plug protection; equipped with four medium square light elements; symmetrical light distribution with precise radiation characteristic, beam angle 33°; high quality reflector with micro-faceted, aluminum-vaporised surface; Reflector chrome; UGR  $\leq$  10; VDU compatible workplace luminaire according to DIN EN 12464-1; luminance above 65°  $\leq$  1500 cd/m<sup>2</sup>; passive cooling of the LEDs through improved heat sink geometry; light colour 4000 K; binning initial MacAdam  $\leq$  3 SDCM; CRI  $\geq$  90; min. 80% of luminous flux after 50000 operating hours; energy-efficient high power LEDs with very good colour rendering; degree of protection IP20; PC3 48V; DALI single control; flicker-free visual comfort through analogue current control (minimum value 1%); light source not replaceable; suitable for MOVE IT 45 set (4 insets for SMALL, 6 for MEDIUM and LARGE, 8 for X-LARGE);

## Light distribution



## Product drawing



## Installation instructions



## Lighting calculator





Project / Type

Notes

Count / Date

Maintenance Factors

Operating Time [h]	10 000	20 000	30 000	40 000	50 000
LLMF	0.94	0.91	0.89	0.87	0.84
LSF	1	1	1	1	1

MF

MF

LMF<sup>a</sup>

LMF × RSMF × LLMF × LSF

Maintenance Factor

Luminaire Maintenance Factor

RSMF<sup>a</sup>

LLMF

LSF

Room Surface Maintenance Factor

Lamp Lumens Maintenance Factor

Lamp Survival Faktor

<sup>a</sup> According to "CIE 97, Maintenance of indoor electric lighting systems", 2005, ISBN 3-900-734-34-8. The values must be determined by the planner.