

SQUADRO 1 × 4 lamps wallwasher

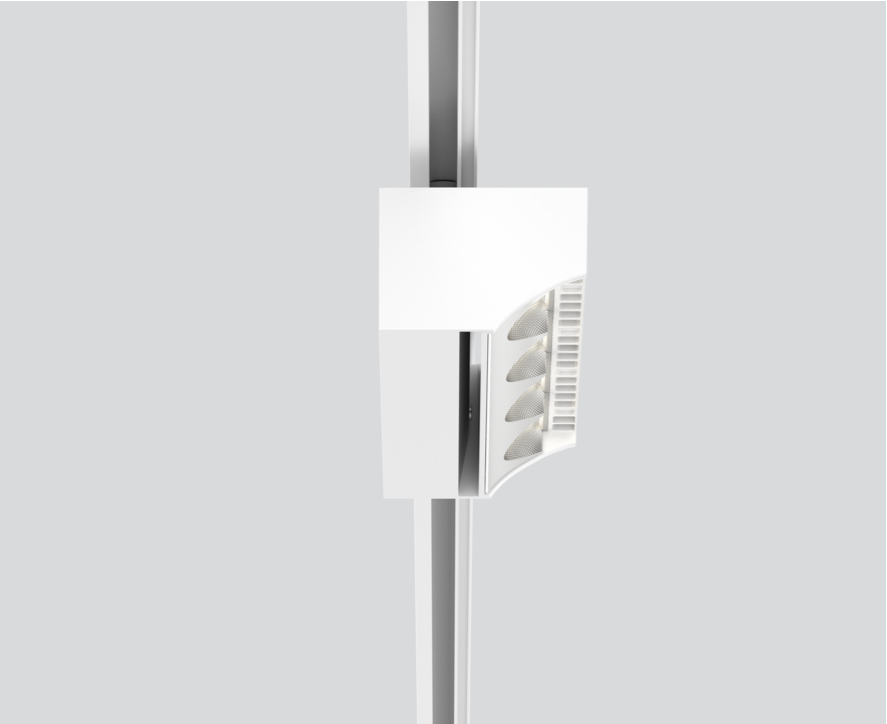
track
149-2231637A



Project / Type

Notes

Count / Date



General
Ceiling , Track
tilt min 15°
tilt max 15°
rotation 365°
white
IP20
6470 lm

LED
4000 K
CRI ≥ 80
L80 / 50000 h
initial MacAdam ≤ 3 SDCM
MR 0.74
MDER 0.67

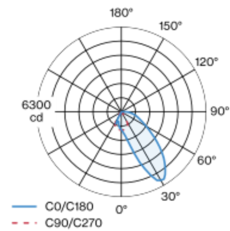
Optical
wall floor washer
PstLM ≤ 1.0 ¹
SVM ≤ 0.4 ¹

Electrical
DALI-2
system 51 W
PC1 220-240V
system 127 lm/W ²

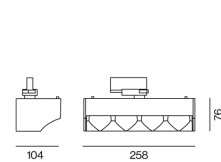
Physical
length 258 mm
width 104 mm
height 76 mm
1.4 kg

Tracked spotlight in die cast aluminium with 4-lamp design; surface white powder coated; converter integrated into spotlight head; heat sink integrated into luminaire geometry for optimum thermal management and passive cooling of LEDs; with COB (Chip on Board) technology for maximum efficiency; light colour 4000 K; binning initial MacAdam ≤ 3 SDCM; CRI ≥ 80; min. 80% of luminous flux after 50000 operating hours; energy efficient LEDs with high CRI; aisle spotlight wall floor washer with special, multi-free-form, facet effect surface reflectors for high precision light control; precise shelf and aisle zone lighting, optimum longitudinal glare control for high viewing comfort in the aisle zone; adjustable light module (tiltable +15° to -15°); 365° rotatable; degree of protection IP20; IP 40 protection glass available as an accessory; accessories are listed separately; PC1 220-240V; incl. DALI-2 converter; adapter for toolless insertion or movement on a variety of 3-phase power tracks; including attachment for linear alignment of the spotlights; light source replaceable by an authorized professional; control gear replaceable by an authorized professional;

Light distribution



Product drawing



¹ Value of containing product at full load (undimmed)
² incl. optical losses and the efficiency of the operating device (converter)

Installation instructions



Lighting calculator



SQUADRO 1 × 4 lamps wallwasher

track
149-2231637A



Project / Type

Notes

Count / Date

Circuit Breaker Types

Automatic Circuit Breaker Type	Number of Fixtures
B10	9
B13	11
B16	14
B20	18
C10	15
C13	19
C16	24
C20	30

Optical accessories

IP40 PROTECTION GLASS

ARTICLE NUMBER(S)
049-2930010

