

# SQUADRO 1 × 4 lamps wallwasher

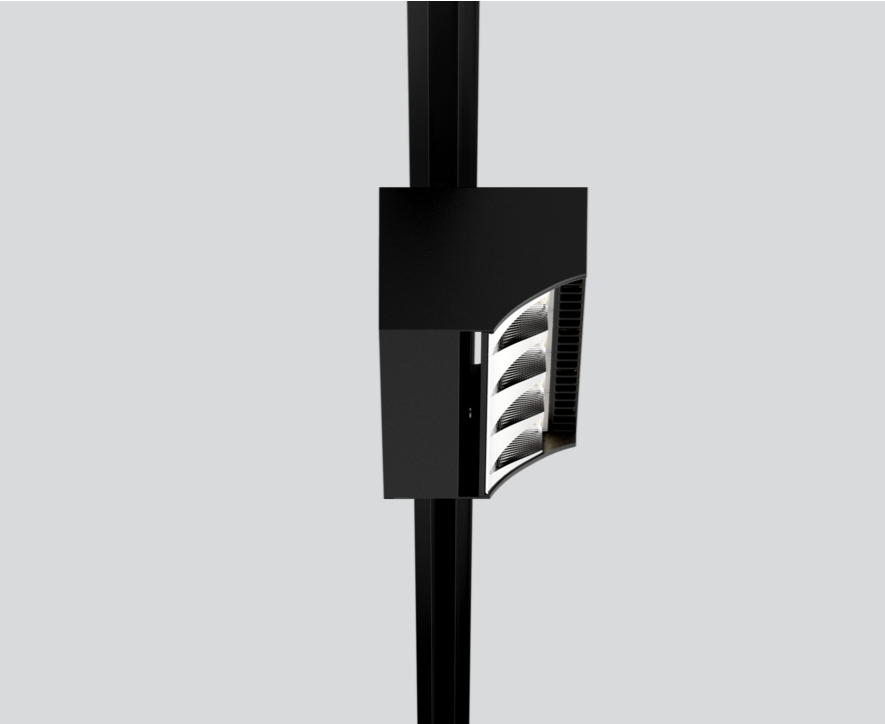
track  
149-2231638S



Project / Type

Notes

Count / Date



|                 |
|-----------------|
| General         |
| Ceiling , Track |
| tilt min 15°    |
| tilt max 15°    |
| rotation 365°   |
| black           |
| IP20            |
| 6380 lm         |

|                          |
|--------------------------|
| LED                      |
| 4000 K                   |
| CRI ≥ 80                 |
| L80 / 50000 h            |
| initial MacAdam ≤ 3 SDCM |
| MR 0.74                  |
| MDER 0.67                |

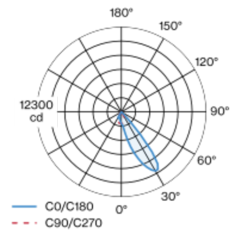
|                          |
|--------------------------|
| Optical                  |
| shelf floor washer       |
| PstLM ≤ 1.0 <sup>1</sup> |
| SVM ≤ 0.4 <sup>1</sup>   |

|                              |
|------------------------------|
| Electrical                   |
| DALI-2                       |
| system 51 W                  |
| PC1 220-240V                 |
| system 125 lm/W <sup>2</sup> |

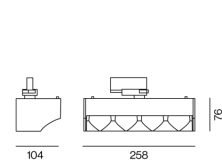
|               |
|---------------|
| Physical      |
| length 258 mm |
| width 104 mm  |
| height 76 mm  |
| 1.4 kg        |

Tracked spotlight in die cast aluminium with 4-lamp design; surface black powder coated; converter integrated into spotlight head; heat sink integrated into luminaire geometry for optimum thermal management and passive cooling of LEDs; with COB (Chip on Board) technology for maximum efficiency; light colour 4000 K; binning initial MacAdam ≤ 3 SDCM; CRI ≥ 80; min. 80% of luminous flux after 50000 operating hours; energy efficient LEDs with high CRI; aisle spotlight shelf floor washer with special, multi-free-form, facet effect surface reflectors for high precision light control; precise shelf and aisle zone lighting, optimum longitudinal glare control for high viewing comfort in the aisle zone; adjustable light module (tiltable +15° to -15°); 365° rotatable; degree of protection IP20; IP 40 protection glass available as an accessory; accessories are listed separately; PC1 220-240V; incl. DALI-2 converter; adapter for toolless insertion or movement on a variety of 3-phase power tracks; including attachment for linear alignment of the spotlights; light source replaceable by an authorized professional; control gear replaceable by an authorized professional;

### Light distribution



### Product drawing



<sup>1</sup> Value of containing product at full load (undimmed)  
<sup>2</sup> incl. optical losses and the efficiency of the operating device (converter)

### Installation instructions



### Lighting calculator

