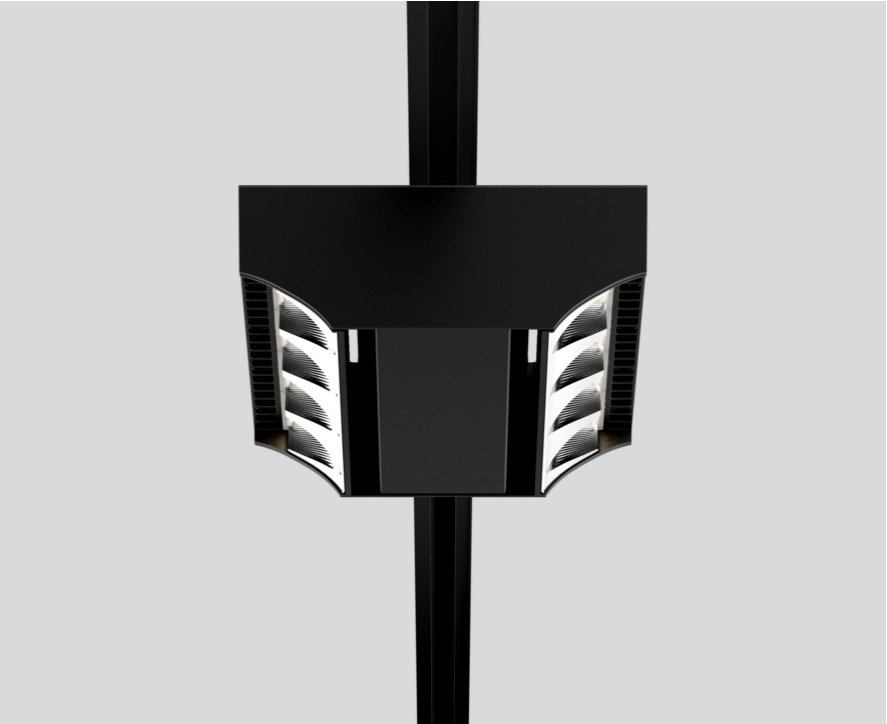


# SQUADRO 2 × 4 lamps wallwasher

track  
149-2240538S



Project / Type	
Notes	
Count / Date	



General
Ceiling , Track
tilt min 15°
tilt max 15°
rotation 365°
black , RAL 9005 <sup>1</sup>
IP20
10600 lm

LED
3000 K
CRI ≥ 80
L80 / 50000 h
initial MacAdam ≤ 3 SDCM
MR 0.58
MDER 0.52

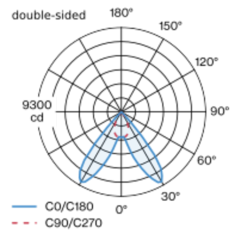
Optical
shelf floor washer
PstLM ≤ 1.0 <sup>2</sup> <sup>3</sup>
SVM ≤ 0.4 <sup>2</sup> <sup>3</sup>

Electrical
DALI-2
220-240 V
system 86 W
system 123 lm/W <sup>4</sup>
PC1
2 DALI Addr.

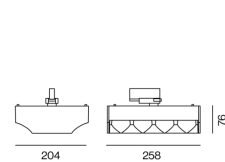
Physical
length 258 mm
width 204 mm
height 76 mm
2.5 kg

Tracked spotlight in die cast aluminium with 2x4-lamp design; surface black powder coated; converter integrated into spotlight head; heat sink integrated into luminaire geometry for optimum thermal management and passive cooling of LEDs; with COB (Chip on Board) technology for maximum efficiency; light colour 3000 K; binning initial MacAdam ≤ 3 SDCM; CRI ≥ 80; min. 80% of luminous flux after 50000 operating hours; energy efficient LEDs with high CRI; aisle spotlight shelf floor washer with special, multi-free-form, facet effect surface reflectors for high precision light control; precise shelf and aisle zone lighting, optimum longitudinal glare control for high viewing comfort in the aisle zone; adjustable light modules (tiltable +15° to -15°); 365° rotatable; degree of protection IP20; IP 40 protection glass available as an accessory; accessories are listed separately; PC1; 220-240 V; incl. DALI-2 converter; adapter for toolless insertion or movement on a variety of 3-phase power tracks; including attachment for linear alignment of the spotlights; light source replaceable by an authorized professional; control gear replaceable by an authorized professional;

## Light distribution



## Product drawing



<sup>1</sup> RAL code <sup>2</sup> double-sided  
<sup>3</sup> Value of containing product at full load (undimmed)  
<sup>4</sup> FIXTURE: incl. consideration of optical losses & internal control unit losses SYSTEM: incl. consideration of optical losses, internal control unit losses & operating device efficiency.

## Installation instructions



# SQUADRO 2 × 4 lamps wallwasher

track  
149-2240538S



Project / Type

Notes

Count / Date

### Circuit Breaker Types

Automatic Circuit Breaker Type	Number of Fixtures
B10	5
B13	6
B16	8
B20	10
C10	8
C13	10
C16	13
C20	17

### Optical accessories

#### IP40 PROTECTION GLASS

ARTICLE NUMBER(S)  
049-2940010

