

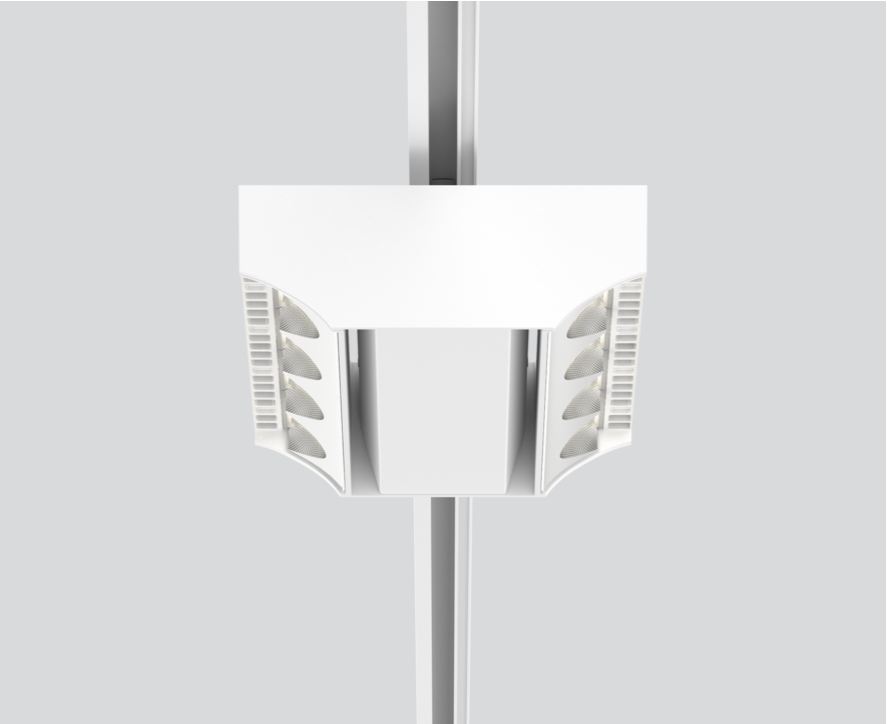
# SQUADRO 2 × 4 lamps wallwasher

track

149-2241637S



Project / Type
Notes
Count / Date



## General

Ceiling , Track
tilt min 15°
tilt max 15°
rotation 365°
white , RAL 9016 <sup>1</sup>
IP20
12800 lm

## LED

4000 K
CRI ≥ 80
L80 / 50000 h
initial MacAdam ≤ 3 SDCM
MR 0.74
MDER 0.67

## Optical

shelf floor washer
PstLM ≤ 1.0 <sup>2</sup> <sup>3</sup>
SVM ≤ 0.4 <sup>2</sup> <sup>3</sup>

## Electrical

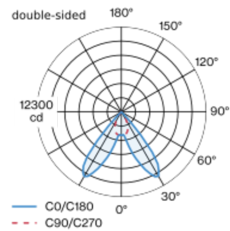
DALI-2
220-240 V
system 101 W
system 127 lm/W <sup>4</sup>
PC1
2 DALI Addr.

## Physical

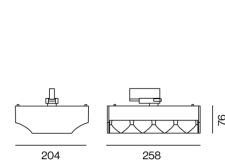
length 258 mm
width 204 mm
height 76 mm
2.5 kg

Tracked spotlight in die cast aluminium with 2x4-lamp design; surface white powder coated; converter integrated into spotlight head; heat sink integrated into luminaire geometry for optimum thermal management and passive cooling of LEDs; with COB (Chip on Board) technology for maximum efficiency; light colour 4000 K; binning initial MacAdam ≤ 3 SDCM; CRI ≥ 80; min. 80% of luminous flux after 50000 operating hours; energy efficient LEDs with high CRI; aisle spotlight shelf floor washer with special, multi-free-form, facet effect surface reflectors for high precision light control; precise shelf and aisle zone lighting, optimum longitudinal glare control for high viewing comfort in the aisle zone; adjustable light modules (tiltable +15° to -15°); 365° rotatable; degree of protection IP20; IP 40 protection glass available as an accessory; accessories are listed separately; PC1; 220-240 V; incl. DALI-2 converter; adapter for toolless insertion or movement on a variety of 3-phase power tracks; including attachment for linear alignment of the spotlights; light source replaceable by an authorized professional; control gear replaceable by an authorized professional;

## Light distribution



## Product drawing



<sup>1</sup> RAL code <sup>2</sup> double-sided  
<sup>3</sup> Value of containing product at full load (undimmed)  
<sup>4</sup> FIXTURE: incl. consideration of optical losses & internal control unit losses SYSTEM: incl. consideration of optical losses, internal control unit losses & operating device efficiency.

## Installation instructions

