



# ESB Headquarters

## FOTOGRAF

Donal Murphy Photography

## ARCHITEKT

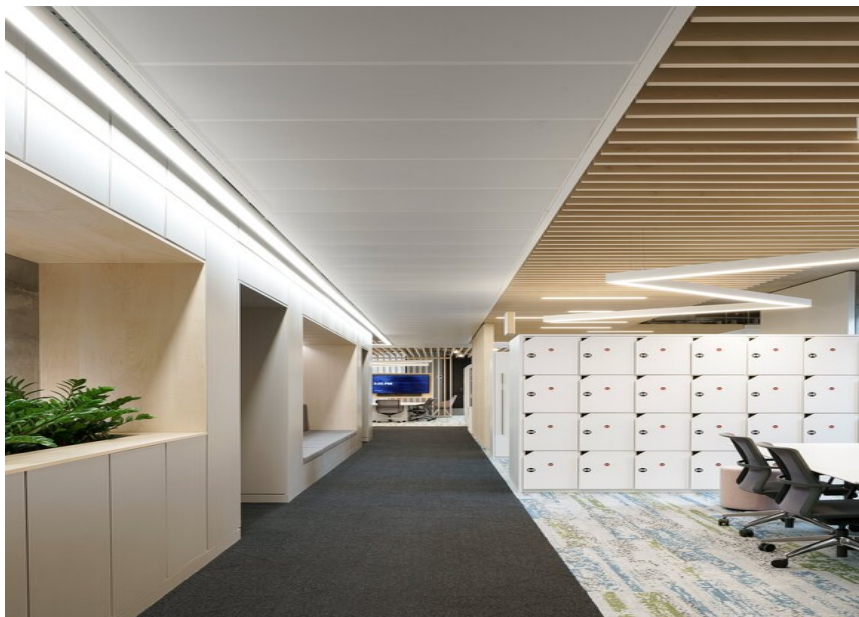
AECOM

## LIGHTING DESIGN

BDP

## STANDORT

Vereinigtes Königreich



### Verwendete Produkte



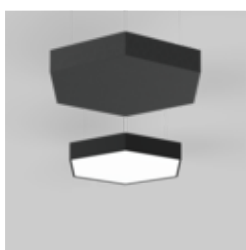
**BASO 40 surface /  
suspended system**



**FRAME 60 trim  
system**



**SASSO 60 round  
recessed 1 lamp**



**HEX-O suspended  
single**



**MINO 60 direct /  
indirect suspended  
system**



# ESB Headquarters

## FOTOGRAF

Donal Murphy Photography

## ARCHITEKT

AECOM

## LIGHTING DESIGN

BDP

## STANDORT

Vereinigtes Königreich

## Bilder





# ESB Headquarters

## FOTOGRAF

Donal Murphy Photography

## ARCHITEKT

AECOM

## LIGHTING DESIGN

BDP

## STANDORT

Vereinigtes Königreich





# ESB Headquarters

## FOTOGRAF

Donal Murphy Photography

## ARCHITEKT

AECOM

## LIGHTING DESIGN

BDP

## STANDORT

Vereinigtes Königreich





# ESB Headquarters

## FOTOGRAF

Donal Murphy Photography

## ARCHITEKT

AECOM

## LIGHTING DESIGN

BDP

## STANDORT

Vereinigtes Königreich





# ESB Headquarters

## FOTOGRAF

Donal Murphy Photography

## ARCHITEKT

AECOM

## LIGHTING DESIGN

BDP

## STANDORT

Vereinigtes Königreich

